

Product Information

Size:

50ul

Reactivity:

Human

Source:

Rabbit

Isotype:

IgG

Applications:

ELISA, IHC

Recommended dilutions:

ELISA:1:2000-1:10000, IHC:1:20-1:200

Protein Background:

E3 SUMO-protein ligase which facilitates SUMO1 conjugation by UBE2I. Involved in the sumoylation of HNRNPK, a p53/TP53 transcriptional coactivator, hence indirectly regulates p53/TP53 transcriptional activation resulting in p21/CDKN1A expression. Monosumoylates ZNF131. Component of a Polycomb group (PcG) multiprotein PRC1-like complex, a complex class required to maintain the transcriptionally repressive state of many genes, including Hox genes, throughout development. PcG PRC1 complex acts via chromatin remodeling and modification of histones; it mediates monoubiquitination of histone H2A 'Lys-119', rendering chromatin heritably changed in its expressibility.

Gene ID:

CBX4

Uniprot

O00257

Synonyms:

E3 SUMO-protein ligase CBX4 (EC 2.3.2. -) (Chromobox protein homolog 4) (Polycomb 2 homolog) (Pc2) (hPc2), CBX4

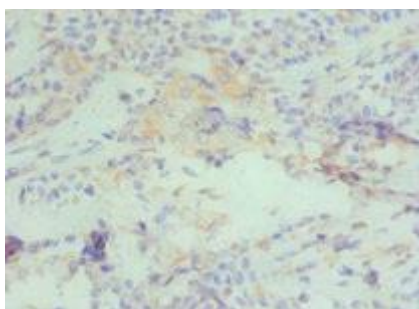
Immunogen:

Recombinant Human E3 SUMO-protein ligase CBX4 protein (401-560AA).

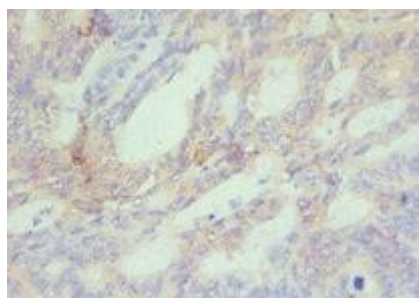
Storage:

PBS with 0.02% sodium azide, 50% glycerol, pH7.3.

Product Images



Immunohistochemistry of paraffin-embedded human breast cancer using PACO42895 at dilution of 1:100.



Immunohistochemistry of paraffin-embedded human colon cancer using PACO42895 at dilution of 1:100.