

PACO42886

Product Information

Size:

50ug

Reactivity:

Human

Source:

Rabbit

Isotype:

IgG

Applications:

ELISA, WB, IHC

Recommended dilutions:

ELISA:1:2000-1:10000, WB:1:1000-1:5000,
IHC:1:20-1:200

Protein Background:

Microtubule-stabilizing protein that may be involved in the regulation of microtubule dynamics and cytoskeletal organization. May act as a regulator of RAC1 activity through interaction with ARHGEF2 to control lamellipodial formation and cell mobility. Does not seem to have protease activity as it has lost the active site residues.

Gene ID:

CAPN6

Uniprot

Q9Y6Q1

Synonyms:

Calpain-6 (Calpain-like protease X-linked) (Calpamodulin) (CalpM), CAPN6, CALPM
CANPX

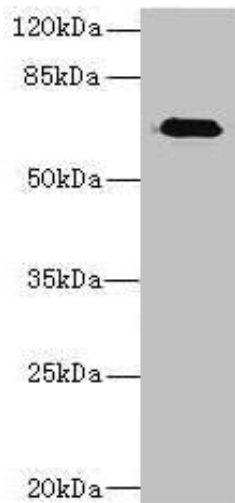
Immunogen:

Recombinant Human Calpain-6 protein (195-494AA).

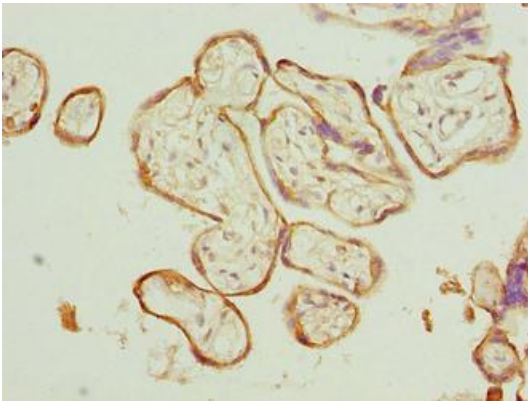
Storage:

Preservative: 0.03% Proclin 300. Constituents: 50% Glycerol, 0.01M PBS, PH 7.4

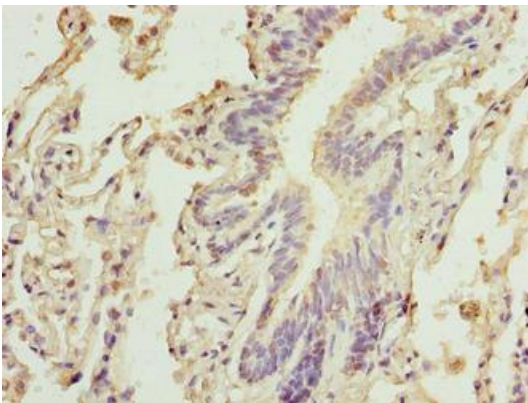
Product Images



Western blot. All lanes: CAPN6 antibody at 5 μ g/ml + Human placenta tissue. Secondary. Goat polyclonal to rabbit IgG at 1/10000 dilution. Predicted band size: 75 kDa. Observed band size: 75 kDa.



Immunohistochemistry of paraffin-embedded human placenta tissue using PACO42886 at dilution of 1:100.



Immunohistochemistry of paraffin-embedded human lung tissue using PACO42886 at dilution of 1:100.