

## Product Information

**Size:**

50ug

**Reactivity:**

Human

**Source:**

Rabbit

**Isotype:**

IgG

**Applications:**

ELISA, IHC

**Recommended dilutions:**

ELISA:1:2000-1:10000, IHC:1:20-1:200

**Protein Background:**

Probable mitochondrial intermembrane chaperone that participates in the import and insertion of some multi-pass transmembrane proteins into the mitochondrial inner membrane. Also required for the transfer of beta-barrel precursors from the TOM complex to the sorting and assembly machinery (SAM complex) of the outer membrane. Acts as a chaperone-like protein that protects the hydrophobic precursors from aggregation and guide them through the mitochondrial intermembrane space.

**Gene ID:**

TIMM8B

**Uniprot**

Q9Y5J9

**Synonyms:**

Mitochondrial import inner membrane translocase subunit Tim8 B (DDP-like protein) (Deafness dystonia protein 2), TIMM8B, DDP2 DDPL TIM8B

**Immunogen:**

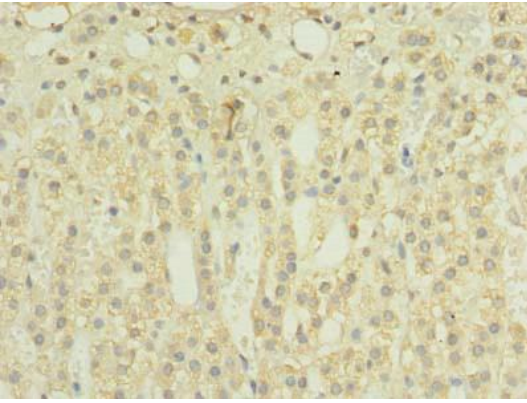
Recombinant Human Mitochondrial import inner membrane translocase subunit Tim8 B protein (33-83AA).

**Storage:**

Preservative: 0.03% Proclin 300. Constituents: 50% Glycerol, 0.01M PBS, PH 7.4

## Product Images

---



Immunohistochemistry of paraffin-embedded human adrenal gland tissue using PACO42874 at dilution of 1:100.