

Product Information

Size:

50ug

Reactivity:

Human

Source:

Rabbit

Isotype:

IgG

Applications:

ELISA, IHC

Recommended dilutions:

ELISA:1:2000-1:10000, IHC:1:20-1:200

Protein Background:

Necessary for the splicing of pre-mRNA. Directly contacts the pre-mRNA branch site adenosine for the first catalytic step of splicing. Enters the spliceosome and associates with the pre-mRNA branch site as part of the 17S U2 or, in the case of the minor spliceosome, as part of the 18S U11/U12 snRNP complex, and thus may facilitate the interaction of these snRNP with the branch sites of U2 and U12 respectively.

Gene ID:

SF3B6

Uniprot

Q9Y3B4

Synonyms:

Splicing factor 3B subunit 6 (Pre-mRNA branch site protein p14) (SF3b 14 kDa subunit) (SF3B14a) (Spliceosome-associated protein, 14-kDa) (Splicing factor 3b, subunit 6, 14kDa), SF3B6, SAP14 SF3B14 SF3B14A

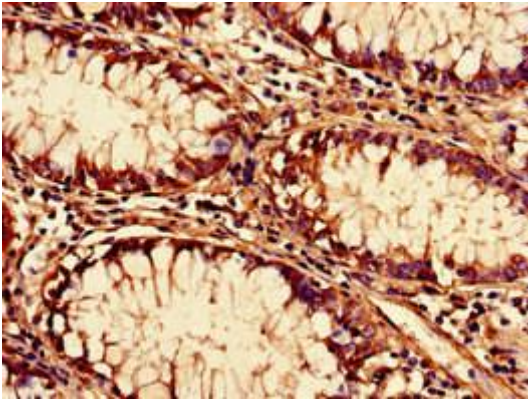
Immunogen:

Recombinant Human Splicing factor 3B subunit 6 protein (1-125AA).

Storage:

Preservative: 0.03% Proclin 300. Constituents: 50% Glycerol, 0.01M PBS, PH 7.4

Product Images



Immunohistochemistry of paraffin-embedded human colon cancer using PACO42862 at dilution of 1:100.