

WDR37 Antibody



PACO42850

Product Information

Size:

50ug

Reactivity:

Human

Source:

Rabbit

Isotype:

IgG

Applications:

ELISA, WB, IHC

Recommended dilutions:

ELISA:1:2000-1:10000, WB:1:500-1:2000,
IHC:1:20-1:200

Protein Background:

Gene ID:

WDR37

Uniprot

Q9Y2I8

Synonyms:

WD repeat-containing protein 37, WDR37, KIAA0982

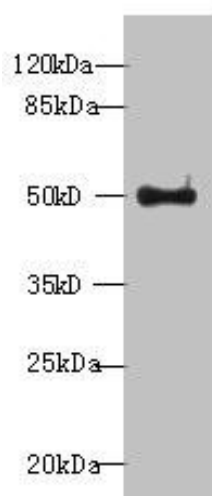
Immunogen:

Recombinant Human WD repeat-containing protein 37 protein (1-264AA).

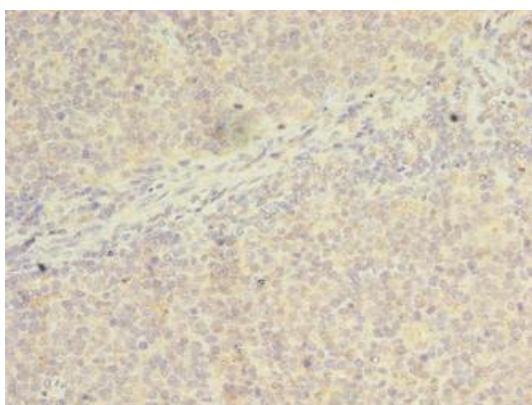
Storage:

Preservative: 0.03% Proclin 300. Constituents: 50% Glycerol, 0.01M PBS, PH 7.4

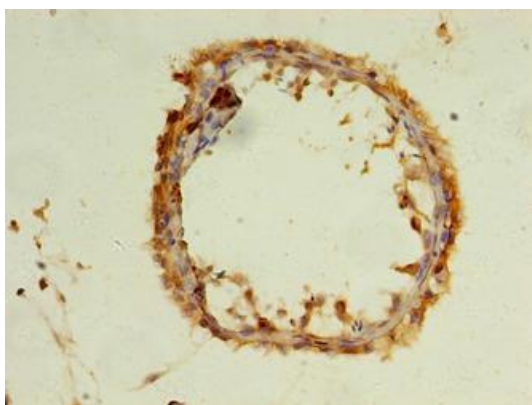
Product Images



Western blot. All lanes: WDR37 antibody at 7 μ g/ml + HepG2 whole cell lysate. Secondary. Goat polyclonal to rabbit IgG at 1/10000 dilution. Predicted band size: 55, 30 kDa. Observed band size: 55 kDa.



Immunohistochemistry of paraffin-embedded human tonsil tissue using PACO42850 at dilution of 1:100.



Immunohistochemistry of paraffin-embedded human testis tissue using PACO42850 at dilution of 1:100.