

Product Information

Size:

50ug

Reactivity:

Human

Source:

Rabbit

Isotype:

IgG

Applications:

ELISA, WB, IHC, IF

Recommended dilutions:

ELISA:1:2000-1:10000, WB:1:500-1:5000,
IHC:1:20-1:200, IF:1:50-1:200

Protein Background:

Functions as guanine nucleotide exchange factor for RAC1. May play a role in semaphorin signaling. Plays a role in the assembly and disassembly of dendritic filopodia, the formation of dendritic spines, regulation of dendrite length and ultimately the formation of synapses.

Gene ID:

FARP1

Uniprot

Q9Y4F1

Synonyms:

FERM, ARHGEF and pleckstrin domain-containing protein 1 (Chondrocyte-derived ezrin-like protein) (FERM, RhoGEF and pleckstrin domain-containing protein 1) (Pleckstrin homology domain-containing family C member 2) (PH domain-containing family C member 2), FARP1, CDEP PLEKHC2

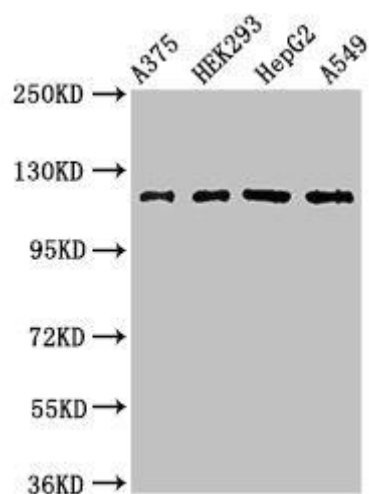
Immunogen:

Recombinant Human FERM, ARHGEF and pleckstrin domain-containing protein 1 protein (1-300AA).

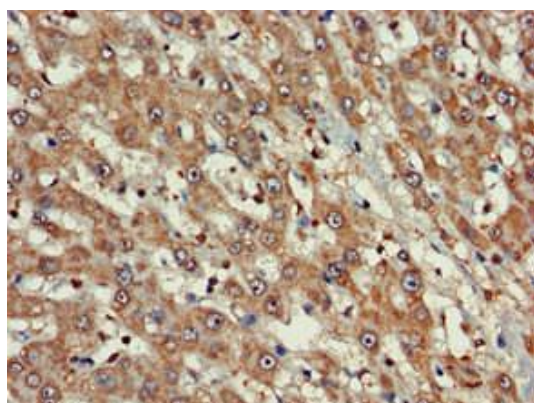
Storage:

Preservative: 0.03% Proclin 300. Constituents: 50% Glycerol, 0.01M PBS, PH 7.4

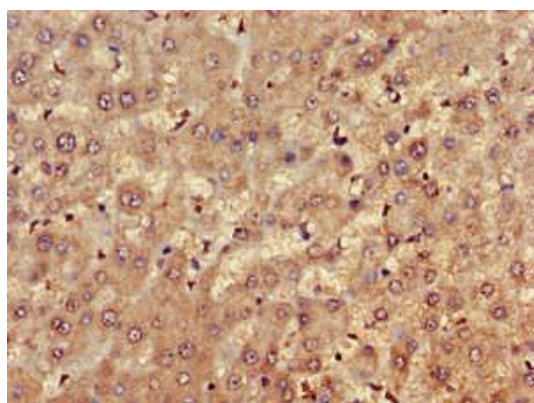
Product Images



Western Blot. Positive WB detected in: A375 whole cell lysate, HEK293 whole cell lysate, HepG2 whole cell lysate, A549 whole cell lysate. All lanes: FARP1 antibody at 3 μ g/ml. Secondary. Goat polyclonal to rabbit IgG at 1/50000 dilution. Predicted band size: 119, 123, 15 kDa. Observed band size: 119 kDa.



Immunohistochemistry of paraffin-embedded human liver cancer using PACO42838 at dilution of 1:100.



Immunohistochemistry of paraffin-embedded human liver tissue using PACO42838 at dilution of 1:100.