

C15orf41 Antibody

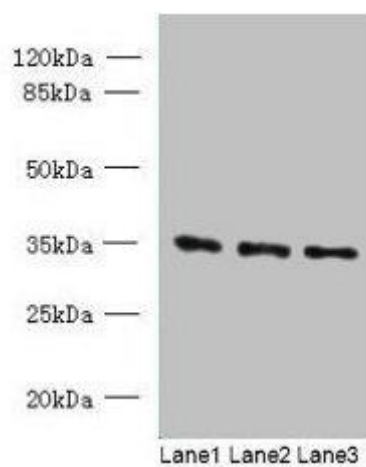


PACO42818

Product Information

Size: 50ug	Protein Background:
Reactivity: Human	Gene ID: C15orf41
Source: Rabbit	Uniprot Q9Y2V0
Isotype: IgG	Synonyms: Uncharacterized protein C15orf41 (Protein HH114), C15orf41
Applications: ELISA, WB	Immunogen: Recombinant Human Uncharacterized protein C15orf41 protein (1-183AA).
Recommended dilutions: ELISA:1:2000-1:10000, WB:1:500-1:2000	Storage: Preservative: 0.03% Proclin 300. Constituents: 50% Glycerol, 0.01M PBS, PH 7.4

Product Images



Western blot. All lanes: C15orf41 antibody at 1.5 μ g/ml. Lane 1: K562 whole cell lysate. Lane 2: HepG2 whole cell lysate. Lane 3: U251 whole cell lysate. Secondary. Goat polyclonal to rabbit IgG at 1/10000 dilution. Predicted band size: 33, 22 kDa. Observed band size: 33 kDa.