

PACO42794

Product Information

Size:

50ug

Reactivity:

Human

Source:

Rabbit

Isotype:

IgG

Applications:

ELISA, WB, IHC

Recommended dilutions:

ELISA:1:2000-1:10000, WB:1:500-1:2000,
IHC:1:20-1:200

Protein Background:

Potential role in vesicular protein trafficking, mainly in the early secretory pathway. Contributes to the coupled localization of TMED2 and TMED10 in the cis-Golgi network.

Gene ID:

TMED3

Uniprot

Q9Y3Q3

Synonyms:

Transmembrane emp24 domain-containing protein 3 (Membrane protein p24B) (p24 family protein gamma-4) (p24gamma4) (p26), TMED3, C15orf22

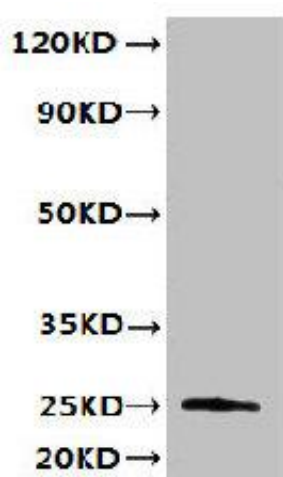
Immunogen:

Recombinant Human Transmembrane emp24 domain-containing protein 3 protein (24-180AA).

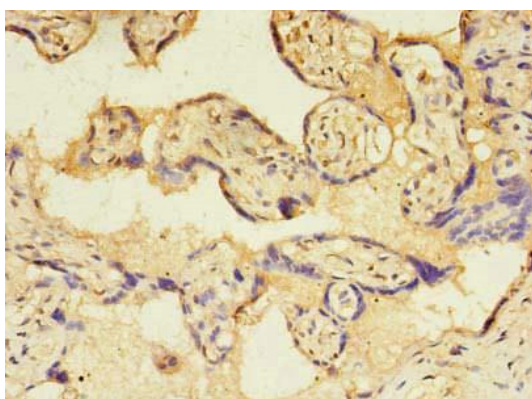
Storage:

Preservative: 0.03% Proclin 300. Constituents: 50% Glycerol, 0.01M PBS, PH 7.4

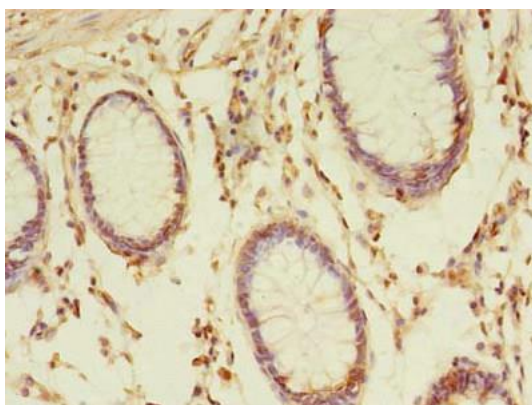
Product Images



Western blot. All lanes: TMED3 antibody at 6 μ g/ml + MCF-7 whole cell lysate. Secondary. Goat polyclonal to rabbit IgG at 1/10000 dilution. Predicted band size: 25, 20 kDa. Observed band size: 25 kDa.



Immunohistochemistry of paraffin-embedded human placenta tissue using PACO42794 at dilution of 1:100.



Immunohistochemistry of paraffin-embedded human colon cancer using PACO42794 at dilution of 1:100.