

EXOSC1 Antibody



PACO42790

Product Information

Size:

50ug

Reactivity:

Human

Source:

Rabbit

Isotype:

IgG

Applications:

ELISA, IHC

Recommended dilutions:

ELISA:1:2000-1:10000, IHC:1:20-1:200

Protein Background:

Gene ID:

EXOSC1

Uniprot

Q9Y3B2

Synonyms:

Exosome complex component CSL4 (Exosome component 1), EXOSC1, CSL4

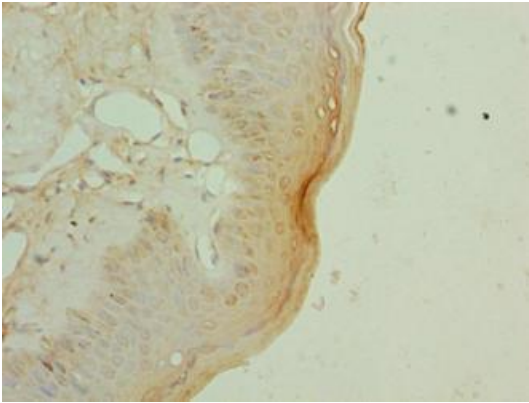
Immunogen:

Recombinant Human Exosome complex component CSL4 protein (9-195AA).

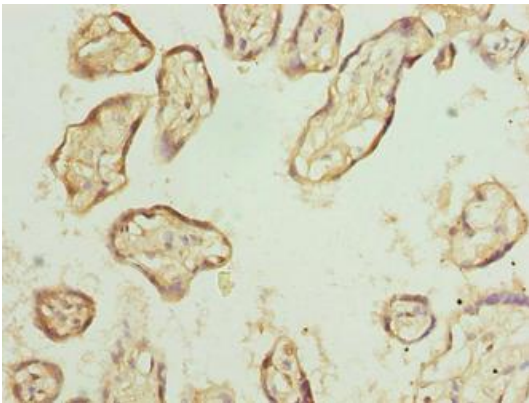
Storage:

Preservative: 0.03% Proclin 300. Constituents: 50% Glycerol, 0.01M PBS, PH 7.4

Product Images



Immunohistochemistry of paraffin-embedded human skin tissue using PACO42790 at dilution of 1:100.



Immunohistochemistry of paraffin-embedded human placenta tissue using PACO42790 at dilution of 1:100.