

SLC17A4 Antibody



PACO42770

Product Information

Size:

50ug

Reactivity:

Human

Source:

Rabbit

Isotype:

IgG

Applications:

ELISA, IF

Recommended dilutions:

ELISA:1:2000-1:10000, IF:1:50-1:200

Protein Background:

Acts as a membrane potential-dependent organic anion transporter, the transport requires a low concentration of chloride ions. May be involved in urate extrusion from the intestinal duct. May recognize hydrophilic anionic drugs such as aspirin, salicylate, and ibuprofen as substrates. Able to actively transport inorganic phosphate into cells via Na(+) cotransport (in vitro).

Gene ID:

SLC17A4

Uniprot

Q9Y2C5

Synonyms:

Probable small intestine urate exporter (Solute carrier family 17 member 4), SLC17A4

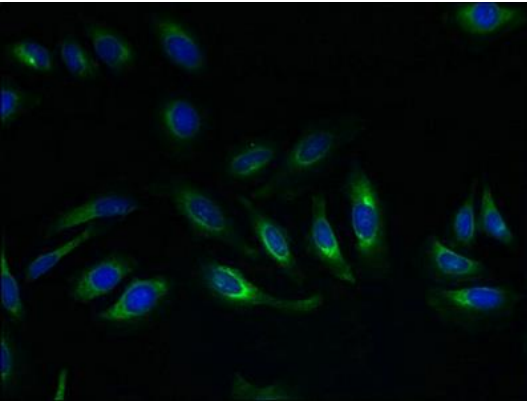
Immunogen:

Recombinant Human Probable small intestine urate exporter protein (14-57AA).

Storage:

Preservative: 0.03% Proclin 300. Constituents: 50% Glycerol, 0.01M PBS, PH 7.4

Product Images



Immunofluorescent analysis of HeLa cells using PACO42770 at dilution of 1:100 and Alexa Fluor 488-conjugated AffiniPure Goat Anti-Rabbit IgG(H+L).