

NIP7 Antibody



PACO42758

Product Information

Size:

50ug

Reactivity:

Human

Source:

Rabbit

Isotype:

IgG

Applications:

ELISA, IHC, IF

Recommended dilutions:

ELISA:1:2000-1:10000, IHC:1:20-1:200,
IF:1:50-1:200

Protein Background:

Required for proper 34S pre-rRNA processing and 60S ribosome subunit assembly.

Gene ID:

NIP7

Uniprot

Q9Y221

Synonyms:

60S ribosome subunit biogenesis protein NIP7 homolog (KD93), NIP7

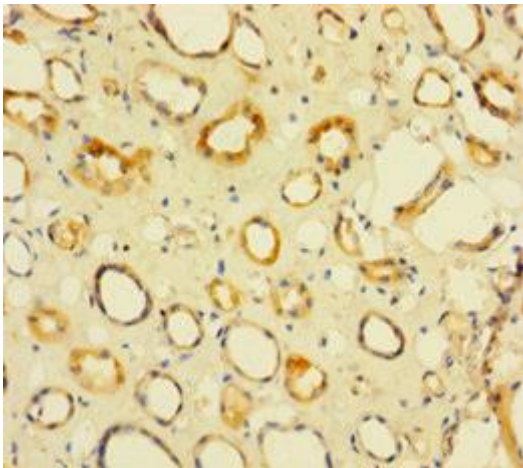
Immunogen:

Recombinant Human 60S ribosome subunit biogenesis protein NIP7 homolog protein (1-180AA).

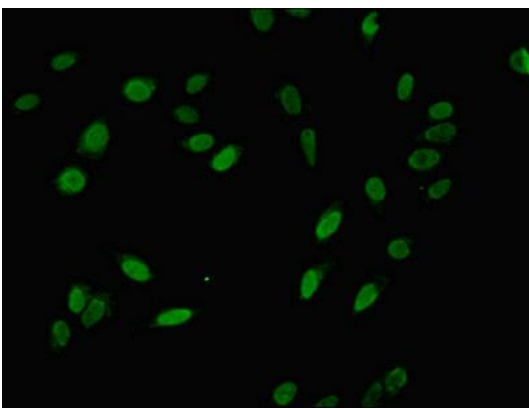
Storage:

Preservative: 0.03% Proclin 300. Constituents: 50% Glycerol, 0.01M PBS, PH 7.4

Product Images



Immunohistochemistry of paraffin-embedded human kidney tissue using PACO42758 at dilution of 1:100.



Immunofluorescent analysis of HeLa cells using PACO42758 at dilution of 1:100 and Alexa Fluor 488-conjugated AffiniPure Goat Anti-Rabbit IgG(H+L).