

PACO42750

---

## Product Information

**Size:**

50ug

**Reactivity:**

Human

**Source:**

Rabbit

**Isotype:**

IgG

**Applications:**

ELISA, IHC

**Recommended dilutions:**

ELISA:1:2000-1:10000, IHC:1:20-1:200

**Protein Background:**

endoplasmic reticulum membrane, membrane, dolichyl-phosphate beta-D-mannosyltransferase activity, dolichyl-phosphate-mannose-protein mannosyltransferase activity, oligosaccharyl transferase activity, cellular protein metabolic process, dolichol metabolic process, dolichol-linked oligosaccharide biosynthetic process, GPI anchor biosynthetic process, post-translational protein modification.

**Gene ID:**

ALG5

**Uniprot**

Q9Y673

**Synonyms:**

Dolichyl-phosphate beta-glucosyltransferase (DoLP-glucosyltransferase) (EC 2.4.1.117) (Asparagine-linked glycosylation protein 5 homolog), ALG5

**Immunogen:**

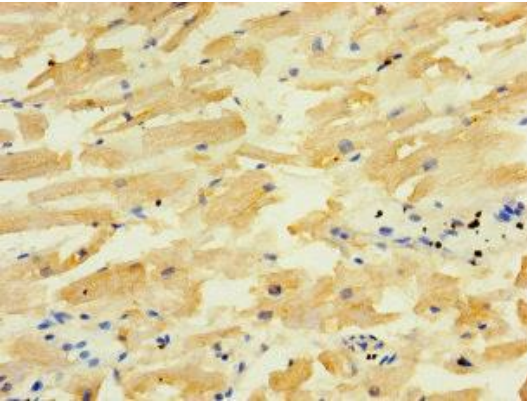
Recombinant Human Dolichyl-phosphate beta-glucosyltransferase protein (29-324AA).

**Storage:**

Preservative: 0.03% Proclin 300. Constituents: 50% Glycerol, 0.01M PBS, PH 7.4

## Product Images

---



Immunohistochemistry of paraffin-embedded human heart tissue using PACO42750 at dilution of 1:100.