

COX11 Antibody



PACO42714

Product Information

Size:

50ug

Reactivity:

Human

Source:

Rabbit

Isotype:

IgG

Applications:

ELISA, IHC, IF

Recommended dilutions:

ELISA:1:2000-1:10000, IHC:1:20-1:200,
IF:1:50-1:200

Protein Background:

Exerts its effect at some terminal stage of cytochrome c oxidase synthesis, probably by being involved in the insertion of the copper B into subunit I.

Gene ID:

COX11

Uniprot

Q9Y6N1

Synonyms:

Cytochrome c oxidase assembly protein COX11, mitochondrial, COX11

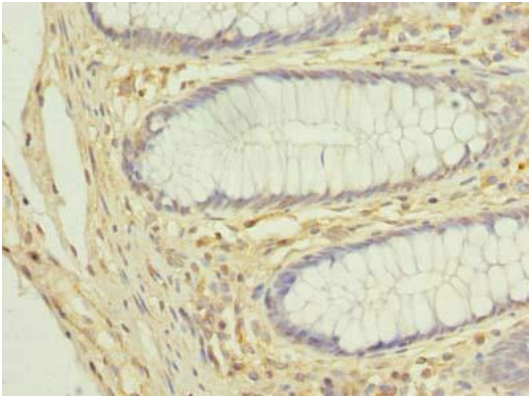
Immunogen:

Recombinant Human Cytochrome c oxidase assembly protein COX11, mitochondrial protein (115-276AA).

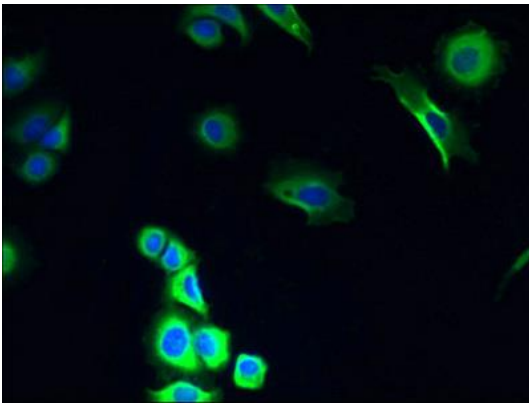
Storage:

Preservative: 0.03% Proclin 300. Constituents: 50% Glycerol, 0.01M PBS, PH 7.4

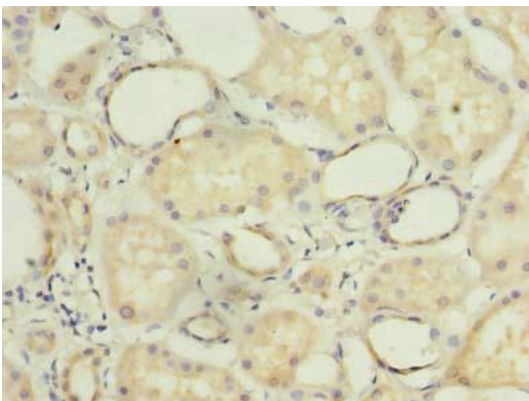
Product Images



Immunohistochemistry of paraffin-embedded human colon cancer using PACO42714 at dilution of 1:100.



Immunofluorescent analysis of MCF-7 cells using PACO42714 at dilution of 1:100 and Alexa Fluor 488-conjugated AffiniPure Goat Anti-Rabbit IgG(H+L).



Immunohistochemistry of paraffin-embedded human kidney tissue using PACO42714 at dilution of 1:100.