

# EMILIN1 Antibody



PACO42706

---

## Product Information

**Size:**

50ug

**Reactivity:**

Human

**Source:**

Rabbit

**Isotype:**

IgG

**Applications:**

ELISA, IHC

**Recommended dilutions:**

ELISA:1:2000-1:10000, IHC:1:20-1:200

**Protein Background:**

May be responsible for anchoring smooth muscle cells to elastic fibers, and may be involved not only in the formation of the elastic fiber, but also in the processes that regulate vessel assembly. Has cell adhesive capacity.

**Gene ID:**

EMILIN1

**Uniprot**

Q9Y6C2

**Synonyms:**

EMILIN-1 (Elastin microfibril interface-located protein 1) (Elastin microfibril interfacier 1), EMILIN1, EMI

**Immunogen:**

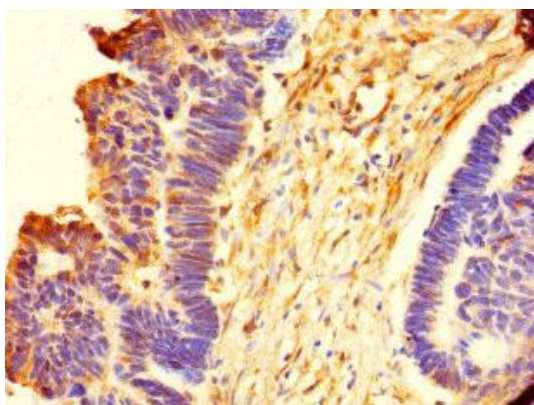
Recombinant Human EMILIN-1 protein (1-347AA).

**Storage:**

Preservative: 0.03% Proclin 300. Constituents: 50% Glycerol, 0.01M PBS, PH 7.4

## Product Images

---



Immunohistochemistry of paraffin-embedded human ovarian tissue using PACO42706 at dilution of 1:100.