

ACTL7A Antibody



PACO42698

Product Information

Size:

50ug

Reactivity:

Human, Mouse

Source:

Rabbit

Isotype:

IgG

Applications:

ELISA, WB, IHC

Recommended dilutions:

ELISA:1:2000-1:10000, WB:1:1000-1:5000,
IHC:1:20-1:200

Protein Background:

Interacts (via N-terminus) with TES (via LIM domain 2). Heterodimer with TES; the heterodimer interacts with ENAH to form a heterotrimer.

Gene ID:

ACTL7A

Uniprot

Q9Y615

Synonyms:

Actin-like protein 7A (Actin-like-7-alpha), ACTL7A

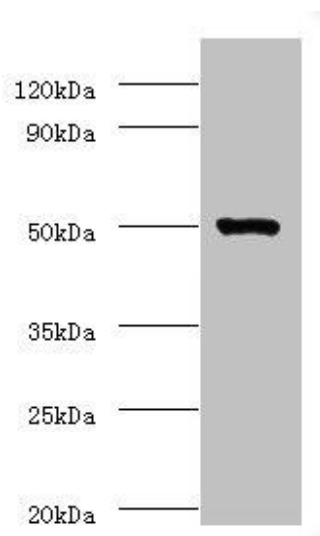
Immunogen:

Recombinant Human Actin-like protein 7A protein (1-435AA).

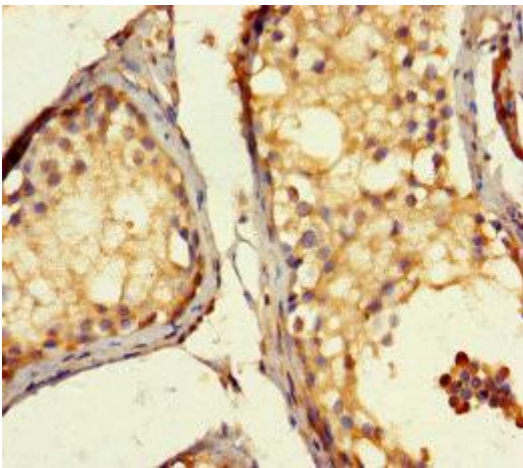
Storage:

Preservative: 0.03% Proclin 300. Constituents: 50% Glycerol, 0.01M PBS, PH 7.4

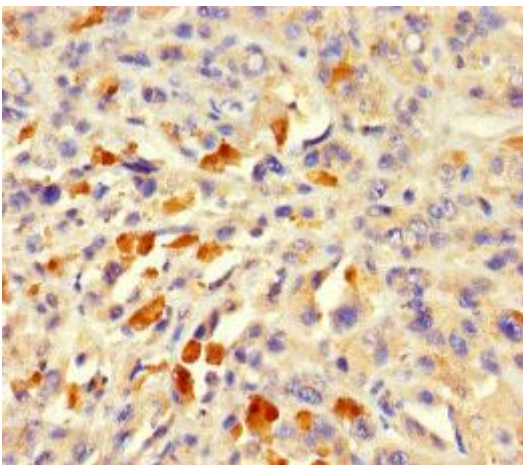
Product Images



Western blot. All lanes: ACTL7A antibody at 2 μ g/ml + Mouse liver tissue. Secondary. Goat polyclonal to rabbit IgG at 1/10000 dilution. Predicted band size: 49 kDa. Observed band size: 49 kDa.



Immunohistochemistry of paraffin-embedded human testis tissue using PACO42698 at dilution of 1:100.



Immunohistochemistry of paraffin-embedded human melanoma using PACO42698 at dilution of 1:100.