

# MRPL11 Antibody



PACO42674

---

## Product Information

**Size:**

50ug

**Reactivity:**

Human

**Source:**

Rabbit

**Isotype:**

IgG

**Applications:**

ELISA, WB, IF

**Recommended dilutions:**

ELISA:1:2000-1:10000, WB:1:1000-1:5000,  
IF:1:50-1:200

**Protein Background:**

mitochondrial inner membrane, mitochondrial large ribosomal subunit, mitochondrial ribosome, poly(A) RNA binding, rRNA binding, structural constituent of ribosome, mitochondrial translation, mitochondrial translational elongation, mitochondrial translational initiation, mitochondrial translational termination.

**Gene ID:**

MRPL11

**Uniprot**

Q9Y3B7

**Synonyms:**

39S ribosomal protein L11, mitochondrial (L11mt) (MRP-L11) (Mitochondrial large ribosomal subunit protein uL11m), MRPL11

**Immunogen:**

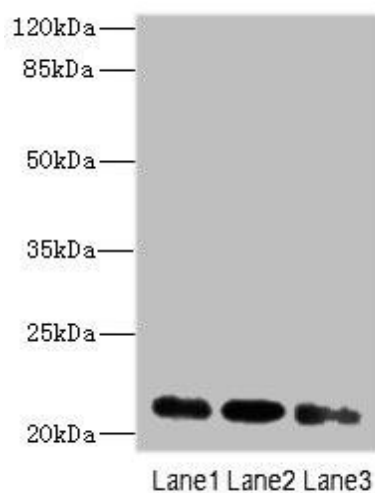
Recombinant Human 39S ribosomal protein L11, mitochondrial protein (1-191AA).

**Storage:**

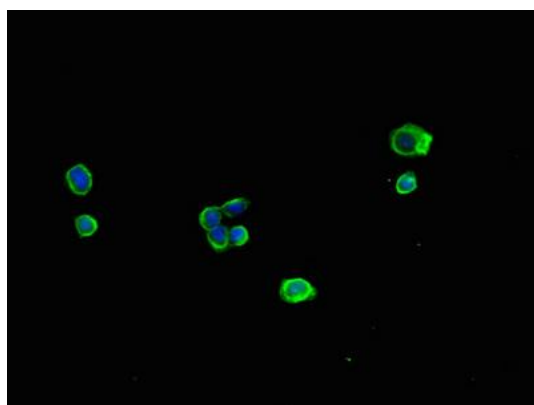
Preservative: 0.03% Proclin 300. Constituents: 50% Glycerol, 0.01M PBS, PH 7.4

## Product Images

---



Western blot. All lanes: MRPL11 antibody at 16 $\mu$ g/ml. Lane 1: HepG2 whole cell lysate. Lane 2: Hela whole cell lysate. Lane 3: A549 whole cell lysate. Secondary. Goat polyclonal to rabbit IgG at 1/10000 dilution. Predicted band size: 21, 19, 20 kDa. Observed band size: 21 kDa.



Immunofluorescent analysis of HepG2 cells using PACO42674 at dilution of 1:100 and Alexa Fluor 488-conjugated AffiniPure Goat Anti-Rabbit IgG(H+L).