

STARD10 Antibody



PACO42666

Product Information

Size:

50ug

Reactivity:

Human, Mouse

Source:

Rabbit

Isotype:

IgG

Applications:

ELISA, WB

Recommended dilutions:

ELISA:1:2000-1:10000, WB:1:500-1:2000

Protein Background:

May play metabolic roles in sperm maturation or fertilization. Phospholipid transfer protein that preferentially selects lipid species containing a palmitoyl or stearoyl chain on the sn-1 and an unsaturated fatty acyl chain (18:1 or 18:2) on the sn-2 position. Able to transfer phosphatidylcholine (PC) and phosphatidylethanolamine (PE) between membranes.

Gene ID:

STARD10

Uniprot

Q9Y365

Synonyms:

START domain-containing protein 10 (StARD10) (Antigen NY-CO-28) (PCTP-like protein) (PCTP-L) (Serologically defined colon cancer antigen 28) (StAR-related lipid transfer protein 10), STARD10, SDCCAG28

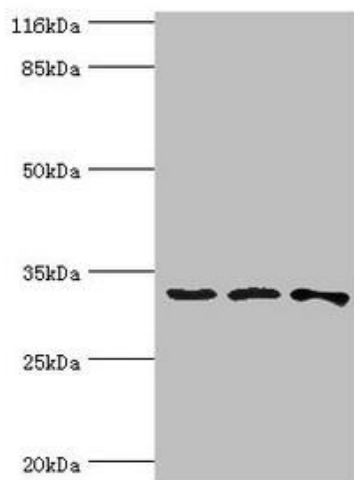
Immunogen:

Recombinant Human START domain-containing protein 10 protein (1-291AA).

Storage:

Preservative: 0.03% Proclin 300. Constituents: 50% Glycerol, 0.01M PBS, PH 7.4

Product Images



Western blot. All lanes: STARD10 antibody at 2 μ g/ml. Lane 1: 293T whole cell lysate. Lane 2: k562 whole cell lysate. Lane 3: Mouse heart tissue. Secondary. Goat polyclonal to rabbit IgG at 1/10000 dilution. Predicted band size: 33 kDa. Observed band size: 33 kDa.