

PACO42654

Product Information

Size:

50ug

Reactivity:

Human

Source:

Rabbit

Isotype:

IgG

Applications:

ELISA, WB, IHC, IF

Recommended dilutions:

ELISA:1:2000-1:10000, WB:1:500-1:2000,
IHC:1:20-1:200, IF:1:50-1:200

Protein Background:

Possible role in transport between endoplasmic reticulum and Golgi.

Gene ID:

ERGIC3

Uniprot

Q9Y282

Synonyms:

Endoplasmic reticulum-Golgi intermediate compartment protein 3 (Serologically defined breast cancer antigen NY-BR-84), ERGIC3, C20orf47 ERV46 SDBCAG84

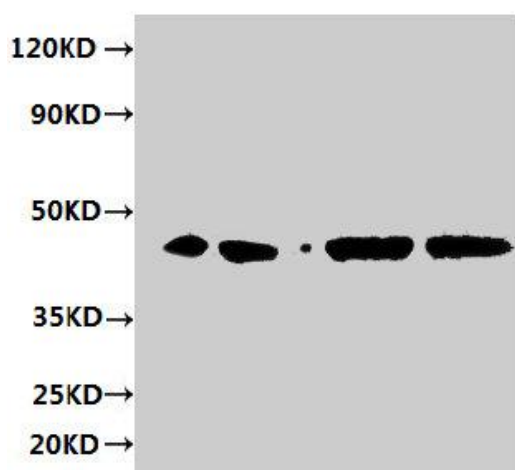
Immunogen:

Recombinant Human Endoplasmic reticulum-Golgi intermediate compartment protein 3 protein (47-341AA).

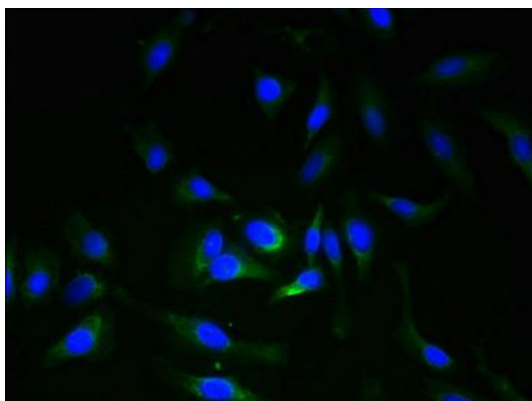
Storage:

Preservative: 0.03% Proclin 300. Constituents: 50% Glycerol, 0.01M PBS, PH 7.4

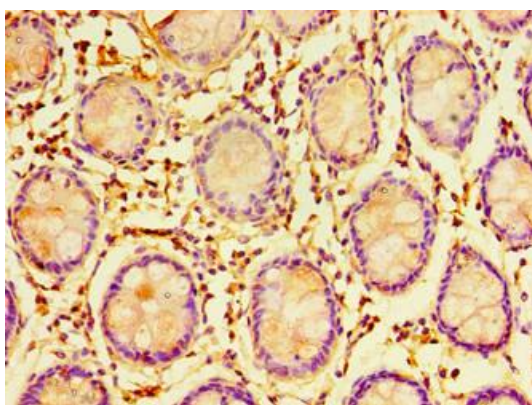
Product Images



Western blot. All lanes: ERGIC3 antibody at 2 μ g/ml. Lane 1: HepG2 whole cell lysate. Lane 2: 293T whole cell lysate. Lane 3: HeLa whole cell lysate. Lane 4: MCF-7 whole cell lysate. Secondary: Goat polyclonal to rabbit IgG at 1/10000 dilution. Predicted band size: 44, 27 kDa. Observed band size: 44 kDa.



Immunofluorescent analysis of HeLa cells using PACO42654 at dilution of 1:100 and Alexa Fluor 488-conjugated AffiniPure Goat Anti-Rabbit IgG(H+L).



Immunohistochemistry of paraffin-embedded human colon tissue using PACO42654 at dilution of 1:100.