

PACO42626

Product Information

Size:

50ug

Reactivity:

Human

Source:

Rabbit

Isotype:

IgG

Applications:

ELISA, IHC

Recommended dilutions:

ELISA:1:2000-1:10000, IHC:1:20-1:200

Protein Background:

Interacts with subunit of G(i) alpha proteins and regulates the activation of G(i) alpha proteins.

Gene ID:

GPSM3

Uniprot

Q9Y4H4

Synonyms:

G-protein-signaling modulator 3 (Activator of G-protein signaling 4) (G18.1b) (Protein G18), GPSM3, AGS4 C6orf9 G18

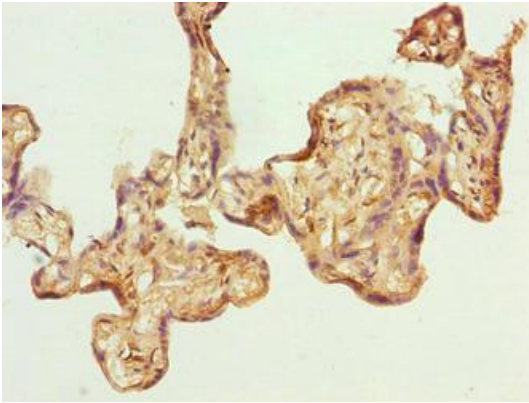
Immunogen:

Recombinant Human G-protein-signaling modulator 3 protein (1-160AA).

Storage:

Preservative: 0.03% Proclin 300. Constituents: 50% Glycerol, 0.01M PBS, PH 7.4

Product Images



Immunohistochemistry of paraffin-embedded human placenta tissue using PACO42626 at dilution of 1:100.