

# MTMR7 Antibody



PACO42582

---

## Product Information

**Size:**

50ug

**Reactivity:**

Human, Mouse

**Source:**

Rabbit

**Isotype:**

IgG

**Applications:**

ELISA, WB

**Recommended dilutions:**

ELISA:1:2000-1:10000, WB:1:1000-1:5000

**Protein Background:**

Phosphatase that acts on lipids with a phosphoinositol headgroup.

**Gene ID:**

MTMR7

**Uniprot**

Q9Y216

**Synonyms:**

Myotubularin-related protein 7 (EC 3.1.3. -), MTMR7

**Immunogen:**

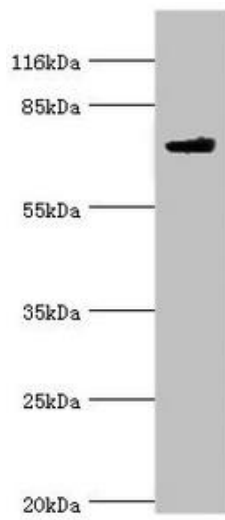
Recombinant Human Myotubularin-related protein 7 protein (1-660AA).

**Storage:**

Preservative: 0.03% Proclin 300. Constituents: 50% Glycerol, 0.01M PBS, PH 7.4

## Product Images

---



Western blot. All lanes: MTMR7 antibody at 2 $\mu$ g/ml + Mouse brain tissue. Secondary. Goat polyclonal to rabbit IgG at 1/10000 dilution. Predicted band size: 76, 65 kDa. Observed band size: 76 kDa.