

TRAPPC2L Antibody



PACO42558

Product Information

Size:

50ug

Reactivity:

Human, Mouse

Source:

Rabbit

Isotype:

IgG

Applications:

ELISA, WB, IHC

Recommended dilutions:

ELISA:1:2000-1:10000, WB:1:500-1:2000,
IHC:1:20-1:200

Protein Background:

May play a role in vesicular transport from endoplasmic reticulum to Golgi.

Gene ID:

TRAPPC2L

Uniprot

Q9UL33

Synonyms:

Trafficking protein particle complex subunit 2-like protein, TRAPPC2L

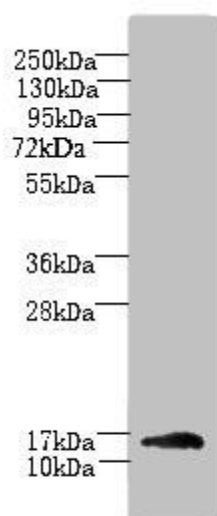
Immunogen:

Recombinant Human Trafficking protein particle complex subunit 2-like protein (1-139AA).

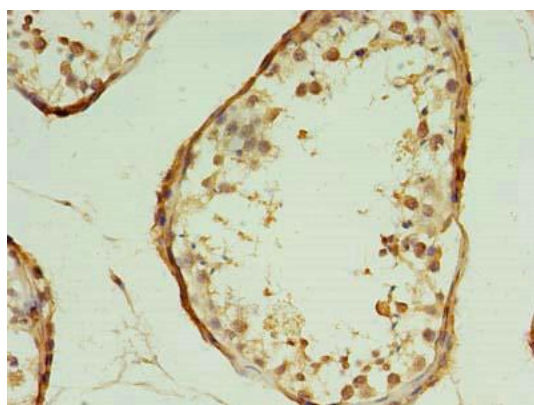
Storage:

Preservative: 0.03% Proclin 300. Constituents: 50% Glycerol, 0.01M PBS, PH 7.4

Product Images



Western blot. All lanes: TRAPPC2L antibody at 5 μ g/ml + Mouse kidney tissue. Secondary. Goat polyclonal to rabbit IgG at 1/10000 dilution. Predicted band size: 16 kDa. Observed band size: 16 kDa.



Immunohistochemistry of paraffin-embedded human testis tissue using PACO42558 at dilution of 1:100.