

Product Information

Size:

50ug

Reactivity:

Human

Source:

Rabbit

Isotype:

IgG

Applications:

ELISA, WB, IHC, IF

Recommended dilutions:

ELISA:1:2000-1:10000, WB:1:500-1:2000,
IHC:1:20-1:200, IF:1:50-1:200

Protein Background:

TRAP proteins are part of a complex whose function is to bind calcium to the ER membrane and thereby regulate the retention of ER resident proteins.

Gene ID:

SSR3

Uniprot

Q9UNL2

Synonyms:

Translocon-associated protein subunit gamma (TRAP-gamma) (Signal sequence receptor subunit gamma) (SSR-gamma), SSR3, TRAPG

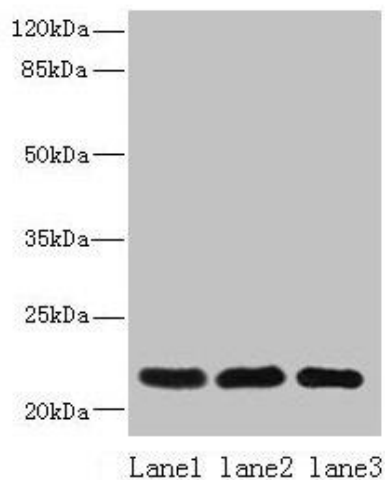
Immunogen:

Recombinant Human Translocon-associated protein subunit γ protein (77-135AA).

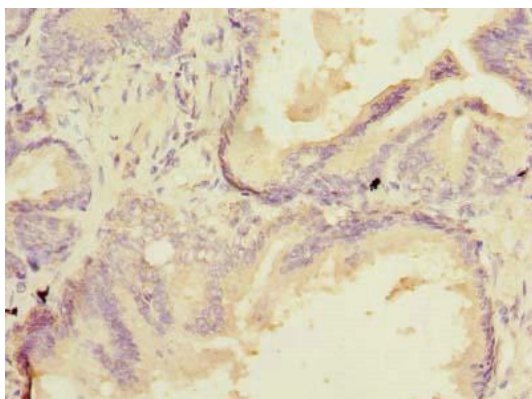
Storage:

Preservative: 0.03% Proclin 300. Constituents: 50% Glycerol, 0.01M PBS, PH 7.4

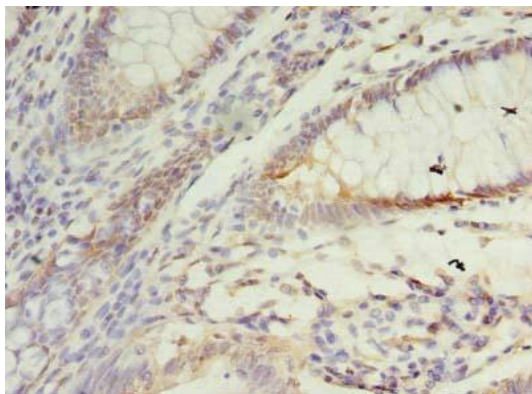
Product Images



Western blot. All lanes: SSR3 antibody at 10 μ g/ml. Lane 1: HeLa whole cell lysate. Lane 2: U87 whole cell lysate. Lane 3: A431 whole cell lysate. Secondary. Goat polyclonal to rabbit IgG at 1/10000 dilution. Predicted band size: 22, 23 kDa. Observed band size: 22 kDa.



Immunohistochemistry of paraffin-embedded human prostate cancer using PACO42526 at dilution of 1:100.



Immunohistochemistry of paraffin-embedded human colon cancer using PACO42526 at dilution of 1:100.