

PACO42522

Product Information

Size:

50ug

Reactivity:

Human, Mouse

Source:

Rabbit

Isotype:

IgG

Applications:

ELISA, WB, IHC, IF

Recommended dilutions:

ELISA:1:2000-1:10000, WB:1:500-1:5000,
IHC:1:20-1:200, IF:1:50-1:200

Protein Background:

Involved in the sodium-independent uptake of dibasic amino acid, and sodium-dependent uptake of some neutral amino acid, . Requires coexpression with SLC3A2/4F2hc to mediate the uptake of arginine, leucine and glutamine. Plays a role in nitric oxide synthesis in human umbilical vein endothelial cells (HUVECs) via transport of L-arginine. Involved in the transport of L-arginine in monocytes.

Gene ID:

SLC7A7

Uniprot

Q9UM01

Synonyms:

Y+L amino acid, transporter 1 (Monocyte amino acid, permease 2) (MOP-2) (Solute carrier family 7 member 7) (y(+)-L-type amino acid, transporter 1) (Y+LAT1) (y+LAT-1), SLC7A7

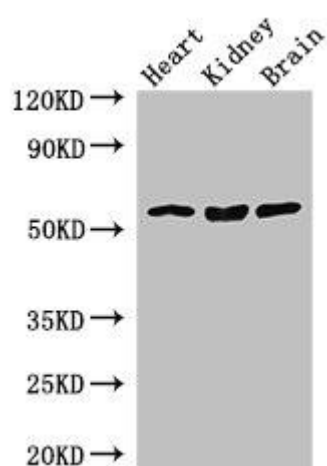
Immunogen:

Recombinant Human Y+L amino acid, transporter 1 protein (325-382AA).

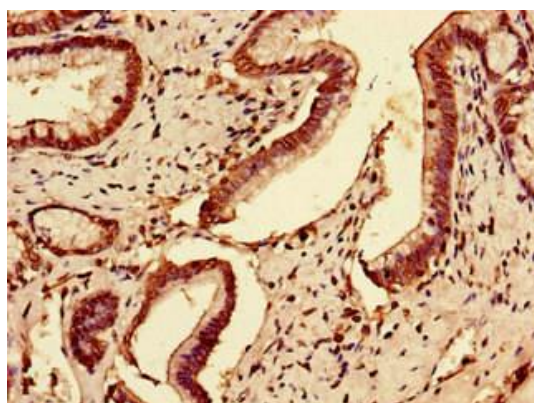
Storage:

Preservative: 0.03% Proclin 300. Constituents: 50% Glycerol, 0.01M PBS, PH 7.4

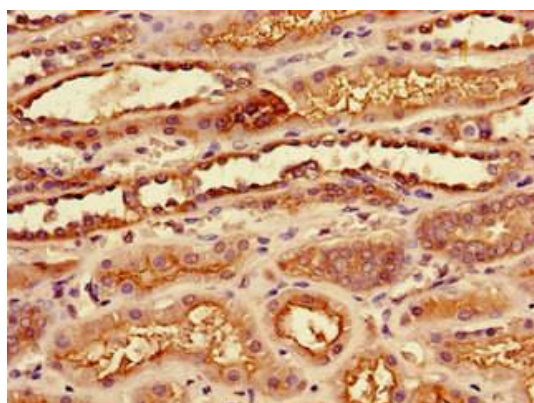
Product Images



Western Blot. Positive WB detected in: Mouse heart tissue, Mouse kidney tissue, Mouse brain tissue. All lanes: SLC7A7 antibody at 3.5 μ g/ml. Secondary. Goat polyclonal to rabbit IgG at 1/50000 dilution. Predicted band size: 56 kDa. Observed band size: 56 kDa.



Immunohistochemistry of paraffin-embedded human pancreatic tissue using PACO42522 at dilution of 1:100.



Immunohistochemistry of paraffin-embedded human kidney tissue using PACO42522 at dilution of 1:100.