

# TSPAN16 Antibody



PACO42514

---

## Product Information

**Size:**

50ug

**Reactivity:**

Human

**Source:**

Rabbit

**Isotype:**

IgG

**Applications:**

ELISA, IF

**Recommended dilutions:**

ELISA:1:2000-1:10000, IF:1:50-1:200

**Protein Background:**

integral component of membrane, integral component of plasma membrane, cell surface receptor signaling pathway.

**Gene ID:**

TSPAN16

**Uniprot**

Q9UKR8

**Synonyms:**

Tetraspanin-16 (Tspan-16) (Tetraspanin TM4-B) (Transmembrane 4 superfamily member 16), TSPAN16, TM4SF16

**Immunogen:**

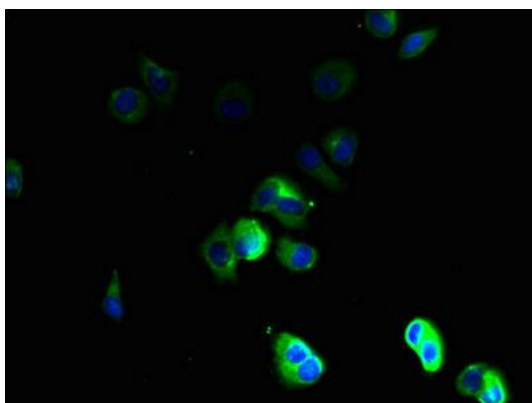
Recombinant Human Tetraspanin-16 protein (116-160AA).

**Storage:**

Preservative: 0.03% Proclin 300. Constituents: 50% Glycerol, 0.01M PBS, PH 7.4

## Product Images

---



Immunofluorescent analysis of MCF-7 cells using PACO42514 at dilution of 1:100 and Alexa Fluor 488-conjugated AffiniPure Goat Anti-Rabbit IgG(H+L).