

ITGB1BP2 Antibody



PACO42510

Product Information

Size:

50ug

Reactivity:

Human

Source:

Rabbit

Isotype:

IgG

Applications:

ELISA, IHC

Recommended dilutions:

ELISA:1:2000-1:10000, IHC:1:20-1:200

Protein Background:

May play a role during maturation and/or organization of muscles cells.

Gene ID:

ITGB1BP2

Uniprot

Q9UKP3

Synonyms:

Integrin beta-1-binding protein 2 (Melusin), ITGB1BP2

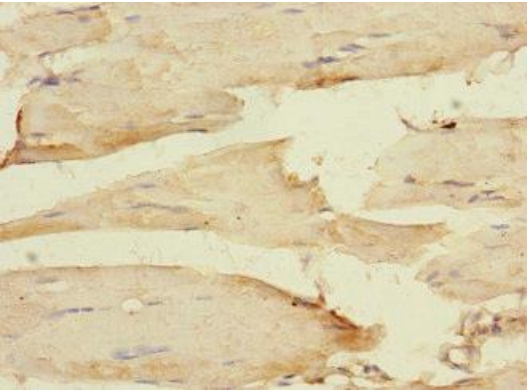
Immunogen:

Recombinant Human Integrin beta-1-binding protein 2 protein (130-329AA).

Storage:

Preservative: 0.03% Proclin 300. Constituents: 50% Glycerol, 0.01M PBS, PH 7.4

Product Images



Immunohistochemistry of paraffin-embedded human skeletal muscle tissue using PACO42510 at dilution of 1:100.