

PITPNC1 Antibody



PACO42502

Product Information

Size:

50ug

Reactivity:

Human

Source:

Rabbit

Isotype:

IgG

Applications:

ELISA, IHC

Recommended dilutions:

ELISA:1:2000-1:10000, IHC:1:20-1:200

Protein Background:

Phosphatidylinositol transfer proteins mediate the monomeric transport of lipids by shielding a lipid from the aqueous environment and binding the lipid in a hydrophobic cavity. Able to transfer phosphatidylinositol in vitro.

Gene ID:

PITPNC1

Uniprot

Q9UKF7

Synonyms:

Cytoplasmic phosphatidylinositol transfer protein 1 (Mammalian rdgB homolog beta) (M-rdgB beta) (MrdgBbeta) (Retinal degeneration B homolog beta) (RdgBbeta), PITPNC1

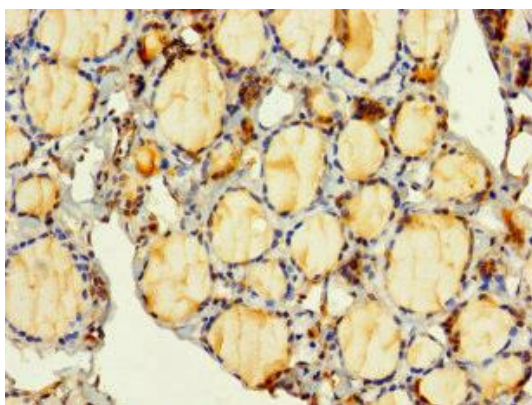
Immunogen:

Recombinant Human Cytoplasmic phosphatidylinositol transfer protein 1 protein (1-268AA).

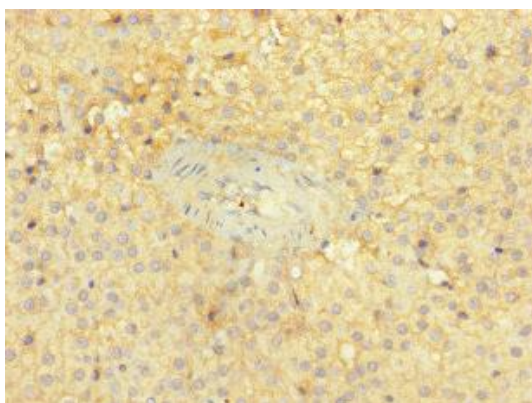
Storage:

Preservative: 0.03% Proclin 300. Constituents: 50% Glycerol, 0.01M PBS, PH 7.4

Product Images



Immunohistochemistry of paraffin-embedded human thyroid tissue using PACO42502 at dilution of 1:100.



Immunohistochemistry of paraffin-embedded human adrenal gland tissue using PACO42502 at dilution of 1:100.