

STX8 Antibody



PACO42486

Product Information

Size:

50ug

Reactivity:

Human

Source:

Rabbit

Isotype:

IgG

Applications:

ELISA, IHC

Recommended dilutions:

ELISA:1:2000-1:10000, IHC:1:20-1:200

Protein Background:

Vesicle trafficking protein that functions in the early secretory pathway, possibly by mediating retrograde transport from cis-Golgi membranes to the ER.

Gene ID:

STX8

Uniprot

Q9UNK0

Synonyms:

Syntaxin-8, STX8

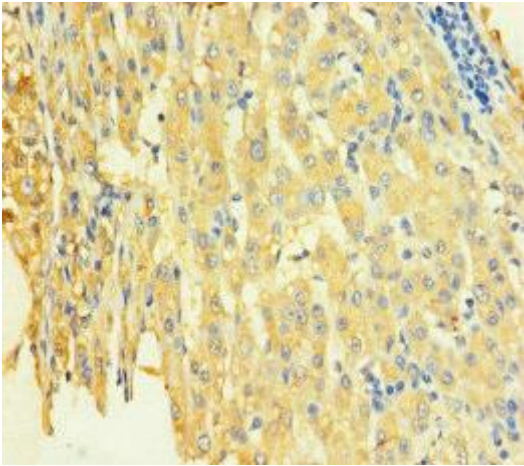
Immunogen:

Recombinant Human Syntaxin-8 protein (1-215AA).

Storage:

Preservative: 0.03% Proclin 300. Constituents: 50% Glycerol, 0.01M PBS, PH 7.4

Product Images



Immunohistochemistry of paraffin-embedded human liver cancer using PACO42486 at dilution of 1:100.