

Product Information

Size:

50ug

Reactivity:

Human

Source:

Rabbit

Isotype:

IgG

Applications:

ELISA, WB, IHC

Recommended dilutions:

ELISA:1:2000-1:10000, WB:1:500-1:2000,
IHC:1:20-1:200

Protein Background:

Acts as a phosphoinositide 5- and phosphoinositide 6-phosphatase and regulates cellular levels of inositol pentakisphosphate (InsP5) and inositol hexakisphosphate (InsP6). Also acts as a 2,3-bisphosphoglycerate 3-phosphatase, by mediating the dephosphorylation of 2,3-bisphosphoglycerate (2,3-BPG) to produce phospho-D-glycerate without formation of 3-phosphoglycerate. May play a role in bone development (endochondral ossification).

Gene ID:

MINPP1

Uniprot

Q9UNW1

Synonyms:

Multiple inositol polyphosphate phosphatase 1 (EC 3.1.3.62) (2,3-bisphosphoglycerate 3-phosphatase) (2,3-BPG phosphatase) (EC 3.1.3.80) (Inositol (1,3,4,5)-tetrakisphosphate 3-phosphatase) (Ins(1,3,4,5)P(4) 3-phosphatase), MINPP1, MIPP

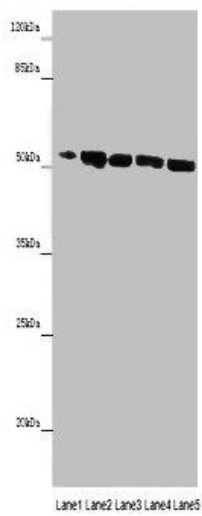
Immunogen:

Recombinant Human Multiple inositol polyphosphate phosphatase 1 protein (31-487AA).

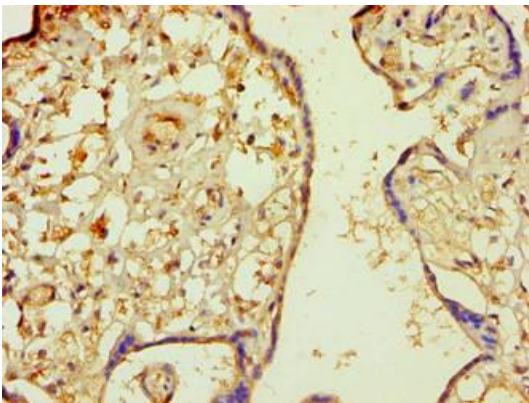
Storage:

Preservative: 0.03% Proclin 300. Constituents: 50% Glycerol, 0.01M PBS, PH 7.4

Product Images



Western blot. All lanes: MINPP1 antibody at 14 μ g/ml. Lane 1: Jurkat whole cell lysate. Lane 2: U251 whole cell lysate. Lane 3: K562 whole cell lysate. Lane 4: Hela whole cell lysate. Lane 5: HepG2 whole cell lysate. Secondary. Goat polyclonal to rabbit IgG at 1/10000 dilution. Predicted band size: 56, 35, 32, 34 kDa. Observed band size: 56 kDa.



Immunohistochemistry of paraffin-embedded human placenta tissue using PACO42462 at dilution of 1:100.