

# GPR34 Antibody



PACO42402

---

## Product Information

**Size:**

50ug

**Reactivity:**

Human, Mouse

**Source:**

Rabbit

**Isotype:**

IgG

**Applications:**

ELISA, WB, IF

**Recommended dilutions:**

ELISA:1:2000-1:10000, WB:1:1000-1:5000,  
IF:1:50-1:200

**Protein Background:**

Orphan receptor.

**Gene ID:**

GPR34

**Uniprot**

Q9UPC5

**Synonyms:**

Probable G-protein coupled receptor 34, GPR34

**Immunogen:**

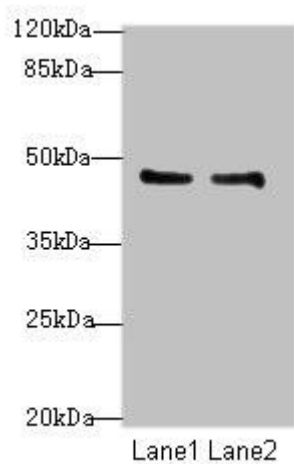
Recombinant Human Probable G-protein coupled receptor 34 protein (1-61AA).

**Storage:**

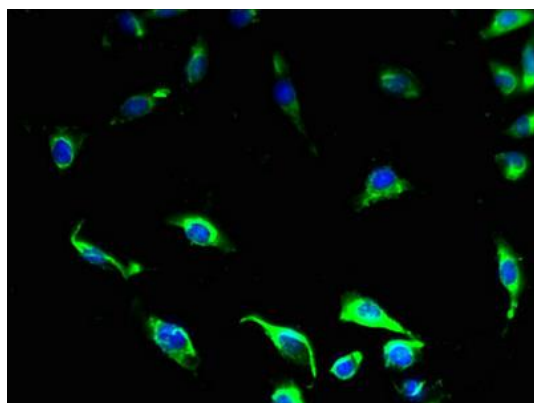
Preservative: 0.03% Proclin 300. Constituents: 50% Glycerol, 0.01M PBS, PH 7.4

## Product Images

---



Western blot. All lanes: GPR34 antibody at 8 $\mu$ g/ml. Lane 1: Mouse liver tissue. Lane 2: Mouse kidney tissue. Secondary: Goat polyclonal to rabbit IgG at 1/10000 dilution. Predicted band size: 44 kDa. Observed band size: 44 kDa.



Immunofluorescent analysis of U251 cells using PACO42402 at dilution of 1:100 and Alexa Fluor 488-conjugated AffiniPure Goat Anti-Rabbit IgG(H+L).