

# SPG21 Antibody



PACO42294

---

## Product Information

**Size:**

50ug

**Reactivity:**

Human

**Source:**

Rabbit

**Isotype:**

IgG

**Applications:**

ELISA, IHC, IF

**Recommended dilutions:**

ELISA:1:2000-1:10000, IHC:1:20-1:200,  
IF:1:50-1:200

**Protein Background:**

May play a role as a negative regulatory factor in CD4-dependent T-cell activation.

**Gene ID:**

SPG21

**Uniprot**

Q9NZD8

**Synonyms:**

Maspardin (acid, cluster protein 33) (Spastic paraplegia 21 autosomal recessive Mast syndrome protein) (Spastic paraplegia 21 protein), SPG21, ACP33

**Immunogen:**

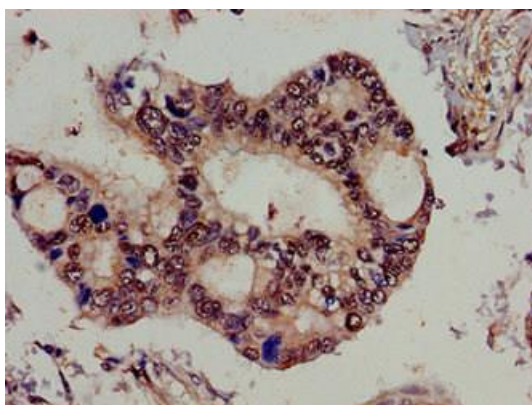
Recombinant Human Maspardin protein (1-308AA).

**Storage:**

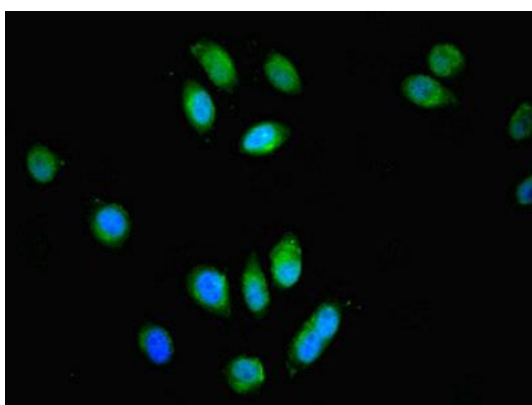
Preservative: 0.03% Proclin 300. Constituents: 50% Glycerol, 0.01M PBS, PH 7.4

## Product Images

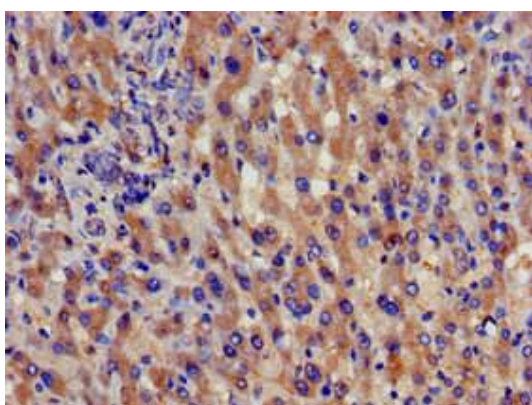
---



Immunohistochemistry of paraffin-embedded human pancreatic cancer using PACO42294 at dilution of 1:100.



Immunofluorescent analysis of A549 cells using PACO42294 at dilution of 1:100 and Alexa Fluor 488-conjugated AffiniPure Goat Anti-Rabbit IgG(H+L).



Immunohistochemistry of paraffin-embedded human liver cancer using PACO42294 at dilution of 1:100.