

TAS2R13 Antibody



PACO42286

Product Information

Size:

50ug

Reactivity:

Human

Source:

Rabbit

Isotype:

IgG

Applications:

ELISA, IHC, IF

Recommended dilutions:

ELISA:1:2000-1:10000, IHC:1:20-1:200,
IF:1:50-1:200

Protein Background:

Receptor that may play a role in the perception of bitterness and is gustducin-linked. May play a role in sensing the chemical composition of the gastrointestinal content. The activity of this receptor may stimulate alpha gustducin, mediate PLC-beta-2 activation and lead to the gating of TRPM5.

Gene ID:

TAS2R13

Uniprot

Q9NYV9

Synonyms:

Taste receptor type 2 member 13 (T2R13) (Taste receptor family B member 3) (TRB3), TAS2R13

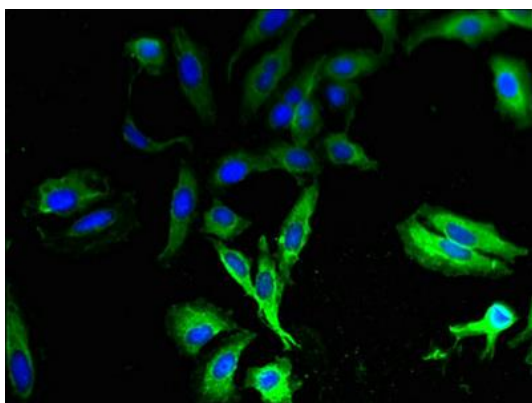
Immunogen:

Recombinant Human Taste receptor type 2 member 13 protein (150-184AA).

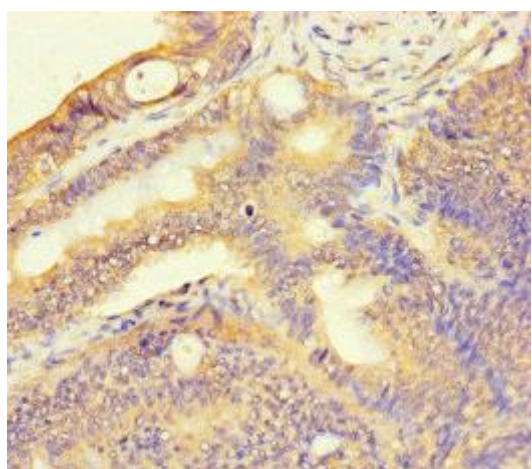
Storage:

Preservative: 0.03% Proclin 300. Constituents: 50% Glycerol, 0.01M PBS, PH 7.4

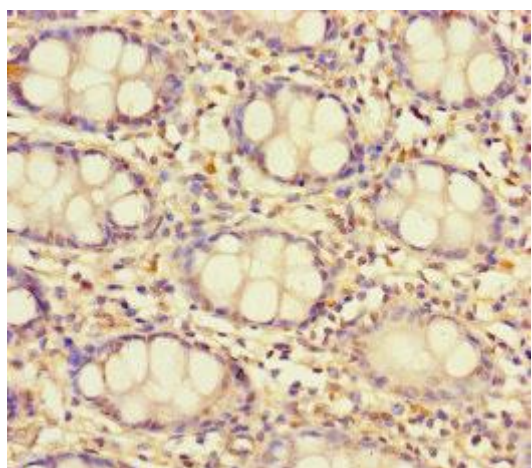
Product Images



Immunofluorescent analysis of HeLa cells using PACO42286 at dilution of 1:100 and Alexa Fluor 488-conjugated AffiniPure Goat Anti-Rabbit IgG(H+L).



Immunohistochemistry of paraffin-embedded human colon cancer using PACO42286 at dilution of 1:100.



Immunohistochemistry of paraffin-embedded human colon tissue using PACO42286 at dilution of 1:100.