

SLC38A7 Antibody



PACO42254

Product Information

Size:

50ug

Reactivity:

Human

Source:

Rabbit

Isotype:

IgG

Applications:

ELISA, IHC, IF

Recommended dilutions:

ELISA:1:2000-1:10000, IHC:1:20-1:200,
IF:1:50-1:200

Protein Background:

Mediates sodium-dependent transport of amino acid, , preferentially L-glutamine.

Gene ID:

SLC38A7

Uniprot

Q9NVC3

Synonyms:

Putative sodium-coupled neutral amino acid, transporter 7 (Solute carrier family 38 member 7), SLC38A7, SNAT7

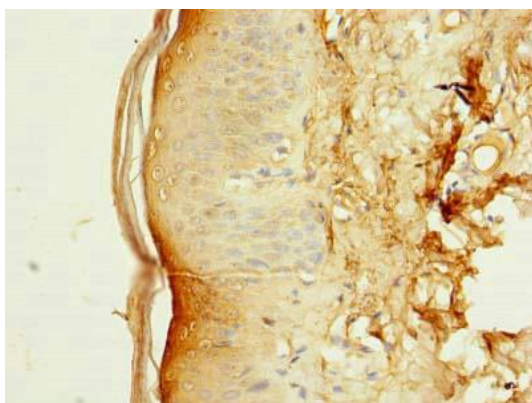
Immunogen:

Recombinant Human Putative sodium-coupled neutral amino acid, transporter 7 protein (1-55AA).

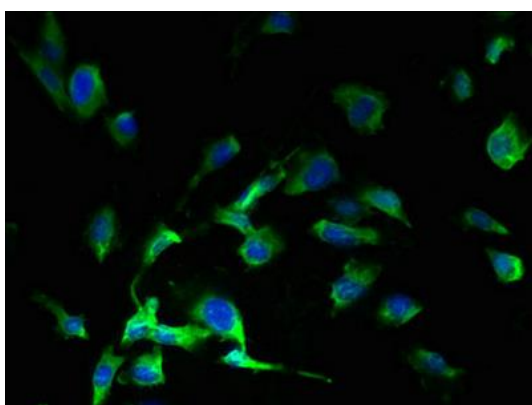
Storage:

Preservative: 0.03% Proclin 300. Constituents: 50% Glycerol, 0.01M PBS, PH 7.4

Product Images



Immunohistochemistry of paraffin-embedded human skin tissue using PACO42254 at dilution of 1:100.



Immunofluorescent analysis of U251 cells using PACO42254 at dilution of 1:100 and Alexa Fluor 488-conjugated AffiniPure Goat Anti-Rabbit IgG(H+L).