

# EXOSC3 Antibody



PACO42226

---

## Product Information

**Size:**

50ug

**Reactivity:**

Human

**Source:**

Rabbit

**Isotype:**

IgG

**Applications:**

ELISA, IHC

**Recommended dilutions:**

ELISA:1:2000-1:10000, IHC:1:20-1:200

**Protein Background:**

**Gene ID:**

EXOSC3

**Uniprot**

Q9NQT5

**Synonyms:**

Exosome complex component RRP40 (Exosome component 3) (Ribosomal RNA-processing protein 40) (p10), EXOSC3, RRP40

**Immunogen:**

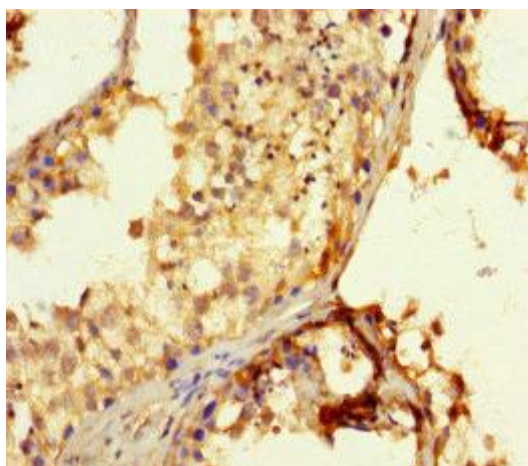
Recombinant Human Exosome complex component RRP40 protein (2-275AA).

**Storage:**

Preservative: 0.03% Proclin 300. Constituents: 50% Glycerol, 0.01M PBS, PH 7.4

## Product Images

---



Immunohistochemistry of paraffin-embedded human testis tissue using PACO42226 at dilution of 1:100.