

BARX1 Antibody



PACO42206

Product Information

Size:

50ug

Reactivity:

Human

Source:

Rabbit

Isotype:

IgG

Applications:

ELISA, WB, IHC

Recommended dilutions:

ELISA:1:2000-1:10000, WB:1:500-1:2000,
IHC:1:20-1:200

Protein Background:

Transcription factor, which is involved in craniofacial development, in odontogenesis and in stomach organogenesis. May have a role in the differentiation of molars from incisors. Plays a role in suppressing endodermal Wnt activity. Binds to a regulatory module of the NCAM promoter.

Gene ID:

BARX1

Uniprot

Q9HBU1

Synonyms:

Homeobox protein BarH-like 1, BARX1

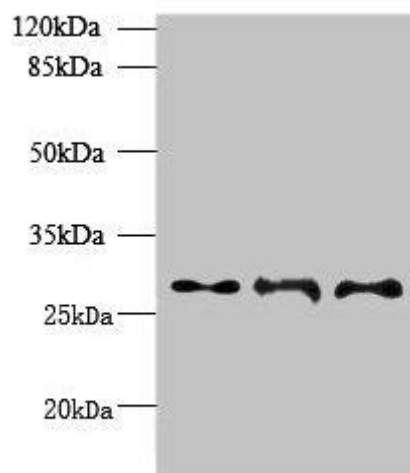
Immunogen:

Recombinant Human Homeobox protein BarH-like 1 protein (1-100AA).

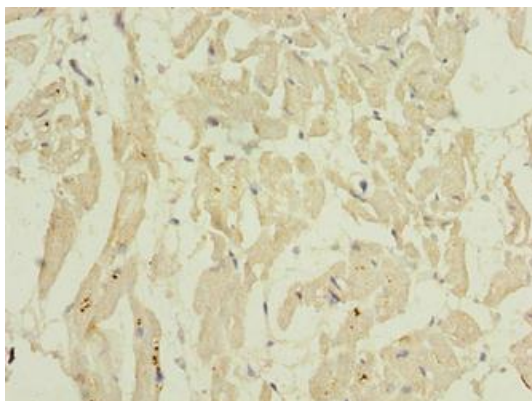
Storage:

Preservative: 0.03% Proclin 300. Constituents: 50% Glycerol, 0.01M PBS, PH 7.4

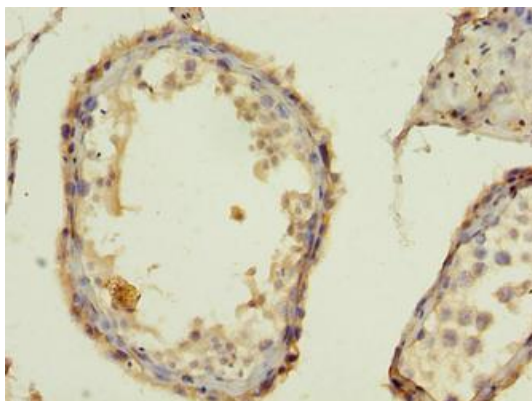
Product Images



Western blot. All lanes: BARX1 antibody at 6 μ g/ml. Lane 1: HeLa whole cell lysate. Lane 2: Jurkat whole cell lysate. Lane 3: CEM whole cell lysate. Secondary: Goat polyclonal to rabbit IgG at 1/10000 dilution. Predicted band size: 28, 12 kDa. Observed band size: 28 kDa.



Immunohistochemistry of paraffin-embedded human heart tissue using PACO42206 at dilution of 1:100.



Immunohistochemistry of paraffin-embedded human testis tissue using PACO42206 at dilution of 1:100.