

ZCCHC4 Antibody



PACO42170

Product Information

Size:

50ug

Reactivity:

Human

Source:

Rabbit

Isotype:

IgG

Applications:

ELISA, WB, IHC

Recommended dilutions:

ELISA:1:2000-1:10000, WB:1:500-1:2000,
IHC:1:20-1:200

Protein Background:

May be a methyltransferase.

Gene ID:

ZCCHC4

Uniprot

Q9H5U6

Synonyms:

Zinc finger CCHC domain-containing protein 4, ZCCHC4

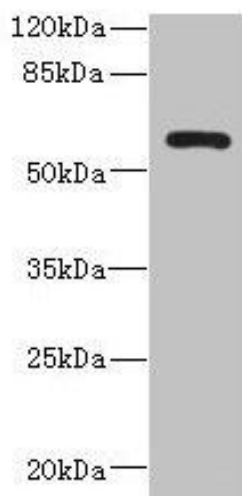
Immunogen:

Recombinant Human Zinc finger CCHC domain-containing protein 4 protein (25-229AA).

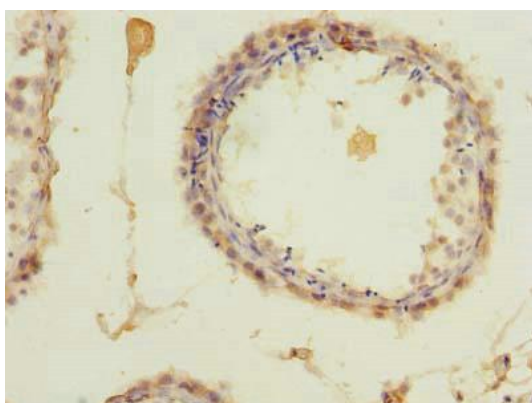
Storage:

Preservative: 0.03% Proclin 300. Constituents: 50% Glycerol, 0.01M PBS, PH 7.4

Product Images



Western blot. All lanes: ZCCHC4 antibody at 0.6 μ g/ml + A431 whole cell lysate. Secondary. Goat polyclonal to rabbit IgG at 1/10000 dilution. Predicted band size: 60, 26, 59 kDa. Observed band size: 60 kDa.



Immunohistochemistry of paraffin-embedded human testis tissue using PACO42170 at dilution of 1:100.