

# ACTL8 Antibody



PACO42166

---

## Product Information

**Size:**

50ug

**Reactivity:**

Human

**Source:**

Rabbit

**Isotype:**

IgG

**Applications:**

ELISA, WB, IHC

**Recommended dilutions:**

ELISA:1:2000-1:10000, WB:1:500-1:2000,  
IHC:1:20-1:200

**Protein Background:**

epithelial cell differentiation.

**Gene ID:**

ACTL8

**Uniprot**

Q9H568

**Synonyms:**

Actin-like protein 8 (Cancer/testis antigen 57) (CT57), ACTL8

**Immunogen:**

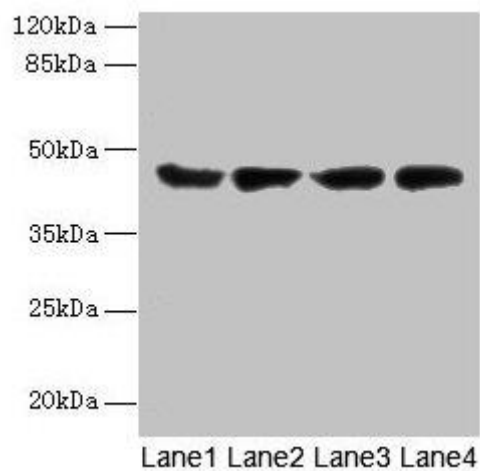
Recombinant Human Actin-like protein 8 protein (1-366AA).

**Storage:**

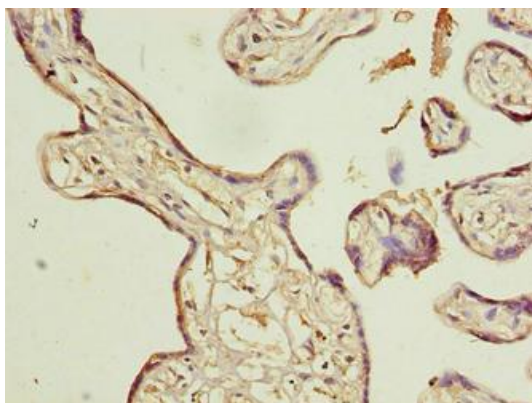
Preservative: 0.03% Proclin 300. Constituents: 50% Glycerol, 0.01M PBS, PH 7.4

## Product Images

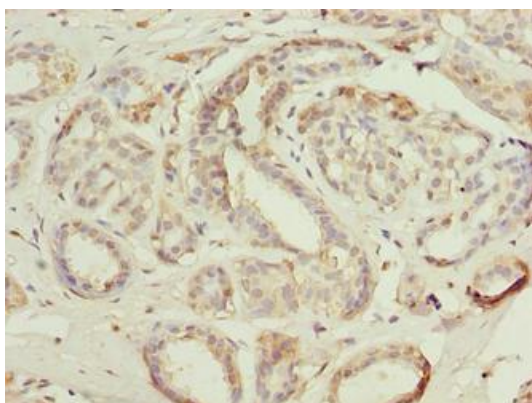
---



Western blot. All lanes: ACTL8 antibody at 5 $\mu$ g/ml. Lane 1: Hela whole cell lysate. Lane 2: HepG2 whole cell lysate. Lane 3: A549 whole cell lysate. Lane 4: MCF-7 whole cell lysate. Secondary: Goat polyclonal to rabbit IgG at 1/10000 dilution. Predicted band size: 42 kDa. Observed band size: 42 kDa.



Immunohistochemistry of paraffin-embedded human placenta tissue using PACO42166 at dilution of 1:100.



Immunohistochemistry of paraffin-embedded human breast cancer using PACO42166 at dilution of 1:100.