

# ARRDC1-AS1 Antibody



PACO42162

---

## Product Information

**Size:**

50ug

**Reactivity:**

Human

**Source:**

Rabbit

**Isotype:**

IgG

**Applications:**

ELISA, IHC

**Recommended dilutions:**

ELISA:1:2000-1:10000, IHC:1:20-1:200

**Protein Background:****Gene ID:**

ARRDC1-AS1

**Uniprot**

Q9H2J1

**Synonyms:**

Uncharacterized protein ARRDC1-AS1 (ARRDC1 antisense RNA 1) (ARRDC1 antisense gene protein 1), ARRDC1-AS1, C9orf37

**Immunogen:**

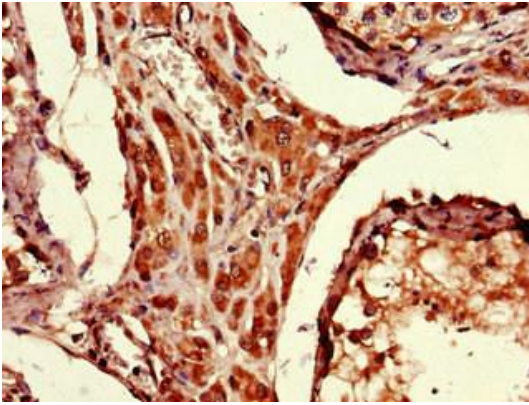
Recombinant Human Uncharacterized protein ARRDC1-AS1 protein (1-176AA).

**Storage:**

Preservative: 0.03% Proclin 300. Constituents: 50% Glycerol, 0.01M PBS, PH 7.4

## Product Images

---



Immunohistochemistry of paraffin-embedded human testis tissue using PACO42162 at dilution of 1:100.