

PACO42158

Product Information

Size:

50ug

Reactivity:

Human, Mouse

Source:

Rabbit

Isotype:

IgG

Applications:

ELISA, WB, IHC

Recommended dilutions:

ELISA:1:2000-1:10000, WB:1:500-1:2000,
IHC:1:20-1:200

Protein Background:

Protein-serine O-palmitoleyltransferase that acts as a key regulator of the Wnt signaling pathway by mediating the attachment of palmitoleate, a 16-carbon monounsaturated fatty acid, (C16:1), to Wnt proteins. Serine palmitoleylation of WNT proteins is required for efficient binding to frizzled receptors.

Gene ID:

PORCN

Uniprot

Q9H237

Synonyms:

Protein-serine O-palmitoleyltransferase porcupine (EC 2.3.1. -) (Protein MG61),
PORCN, MG61 PORC PPN

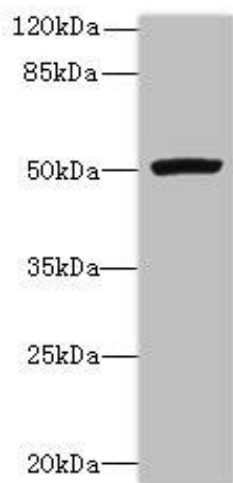
Immunogen:

Recombinant Human Protein-serine O-palmitoleyltransferase porcupine protein (269-332AA).

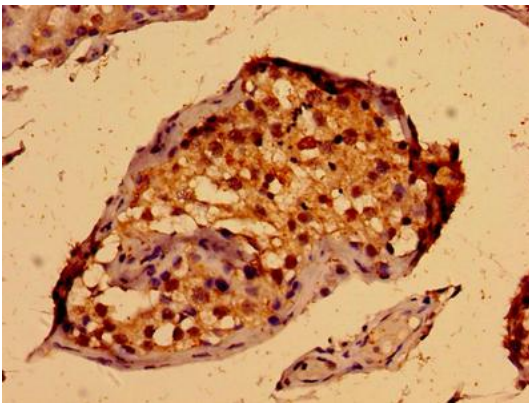
Storage:

Preservative: 0.03% Proclin 300. Constituents: 50% Glycerol, 0.01M PBS, PH 7.4

Product Images



Western blot. All lanes: PORCN antibody at 3 μ g/ml + Mouse thymus tissue. Secondary. Goat polyclonal to rabbit IgG at 1/10000 dilution. Predicted band size: 53, 52, 43 kDa. Observed band size: 53 kDa.



Immunohistochemistry of paraffin-embedded human testis tissue using PACO42158 at dilution of 1:100.