

PACO42146

Product Information

Size:

50ug

Reactivity:

Human

Source:

Rabbit

Isotype:

IgG

Applications:

ELISA, WB

Recommended dilutions:

ELISA:1:2000-1:10000, WB:1:1000-1:5000

Protein Background:

Prevents inappropriate targeting of non-secretory polypeptides to the endoplasmic reticulum (ER). Binds to nascent polypeptide chains as they emerge from the ribosome and blocks their interaction with the signal recognition particle (SRP), which normally targets nascent secretory peptides to the ER. Also reduces the inherent affinity of ribosomes for protein translocation sites in the ER membrane (M sites).

Gene ID:

NACA2

Uniprot

Q9H009

Synonyms:

Nascent polypeptide-associated complex subunit alpha-2 (Alpha-NAC-like) (Hom s 2.01) (Nascent polypeptide-associated complex subunit alpha-like) (NAC-alpha-like), NACA2, NACAL

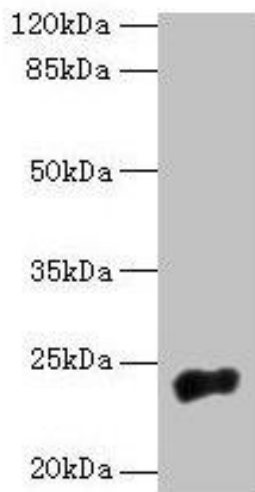
Immunogen:

Recombinant Human Nascent polypeptide-associated complex subunit alpha-2 protein (1-215AA).

Storage:

Preservative: 0.03% Proclin 300. Constituents: 50% Glycerol, 0.01M PBS, PH 7.4

Product Images



Western blot. All lanes: NACA2 antibody at 5 μ g/ml + 293T whole cell lysate. Secondary. Goat polyclonal to rabbit IgG at 1/10000 dilution. Predicted band size: 24 kDa. Observed band size: 24 kDa.