

DSCC1 Antibody



PACO42110

Product Information

Size:

50ug

Reactivity:

Human

Source:

Rabbit

Isotype:

IgG

Applications:

ELISA, WB

Recommended dilutions:

ELISA:1:2000-1:10000, WB:1:1000-1:5000

Protein Background:

Loads PCNA onto primed templates regulating velocity, spacing and restart activity of replication forks. May couple DNA replication to sister chromatid cohesion through regulation of the acetylation of the cohesin subunit SMC3.

Gene ID:

DSCC1

Uniprot

Q9BVC3

Synonyms:

Sister chromatid cohesion protein DCC1 (Defective in sister chromatid cohesion protein 1 homolog), DSCC1, DCC1

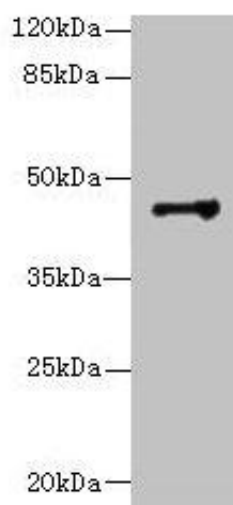
Immunogen:

Recombinant Human Sister chromatid cohesion protein DCC1 protein (1-393AA).

Storage:

Preservative: 0.03% Proclin 300. Constituents: 50% Glycerol, 0.01M PBS, PH 7.4

Product Images



Western blot. All lanes: DSCC1 antibody at 8 μ g/ml + CEM whole cell lysate. Secondary. Goat polyclonal to rabbit IgG at 1/10000 dilution. Predicted band size: 45 kDa. Observed band size: 45 kDa.