

Product Information

Size:

50ug

Reactivity:

Human

Source:

Rabbit

Isotype:

IgG

Applications:

ELISA, IHC, IF

Recommended dilutions:

ELISA:1:2000-1:10000, IHC:1:20-1:200,
IF:1:50-1:200

Protein Background:

Adds the eighth mannose residue in an alpha-1,6 linkage onto the dolichol-PP-oligosaccharide precursor (dolichol-PP-Man(7)GlcNAc(2)) required for protein glycosylation.

Gene ID:

ALG12

Uniprot

Q9BV10

Synonyms:

Dol-P-Man: Man(7)GlcNAc(2)-PP-Dol alpha-1,6-mannosyltransferase (EC 2.4.1.260) (Asparagine-linked glycosylation protein 12 homolog) (hALG12) (Dolichyl-P-Man: Man(7)GlcNAc(2)-PP-dolichyl-alpha-1,6-mannosyltransferase) (Mannosyltransferase ALG12 homolog) (Membrane protein SB87), ALG12

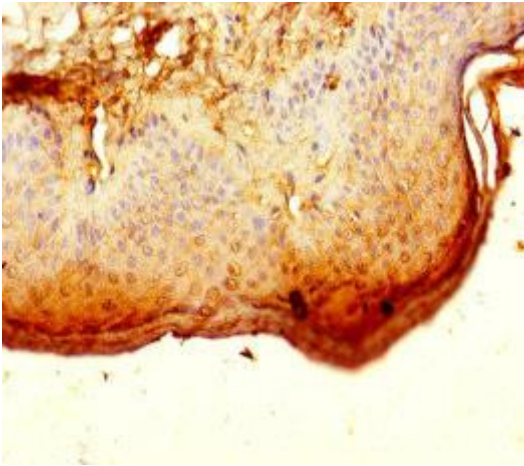
Immunogen:

Recombinant Human Dol-P-Man: Man (7)GlcNAc (2)-PP-Dol alpha-1,6-mannosyltransferase protein (367-422AA).

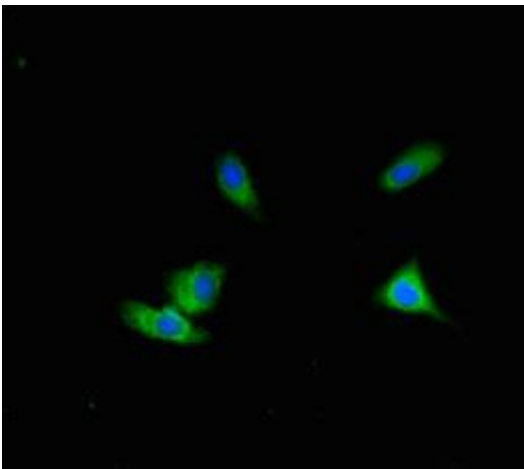
Storage:

Preservative: 0.03% Proclin 300. Constituents: 50% Glycerol, 0.01M PBS, PH 7.4

Product Images



Immunohistochemistry of paraffin-embedded human skin tissue using PACO42102 at dilution of 1:100.



Immunofluorescent analysis of HeLa cells using PACO42102 at dilution of 1:100 and Alexa Fluor 488-conjugated AffiniPure Goat Anti-Rabbit IgG(H+L).