

PACO42022

Product Information

Size:

50ug

Reactivity:

Human

Source:

Rabbit

Isotype:

IgG

Applications:

ELISA, IHC

Recommended dilutions:

ELISA:1:2000-1:10000, IHC:1:20-1:200

Protein Background:

Component of the intraflagellar transport (IFT) complex B, which is essential for the development and maintenance of motile and sensory cilia.

Gene ID:

IFT80

Uniprot

Q9P2H3

Synonyms:

Intraflagellar transport protein 80 homolog (WD repeat-containing protein 56), IFT80, KIAA1374 WDR56

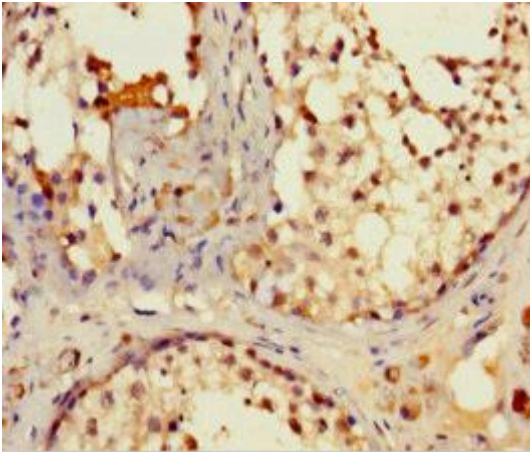
Immunogen:

Recombinant Human Intraflagellar transport protein 80 homolog protein (1-268AA).

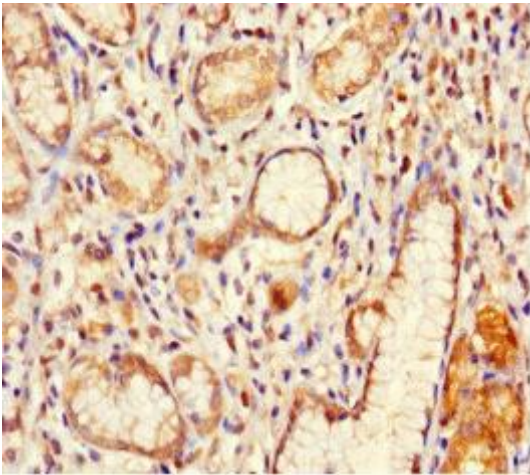
Storage:

Preservative: 0.03% Proclin 300. Constituents: 50% Glycerol, 0.01M PBS, PH 7.4

Product Images



Immunohistochemistry of paraffin-embedded human testis tissue using PACO42022 at dilution of 1:100.



Immunohistochemistry of paraffin-embedded human gastric cancer using PACO42022 at dilution of 1:100.