

Product Information

Size:

50ug

Reactivity:

Human

Source:

Rabbit

Isotype:

IgG

Applications:

ELISA, WB

Recommended dilutions:

ELISA:1:2000-1:10000, WB:1:1000-1:5000

Protein Background:

DNA-dependent RNA polymerase catalyzes the transcription of DNA into RNA using the four ribonucleoside triphosphates as substrates. Component of RNA polymerase I which synthesizes ribosomal RNA precursors.

Gene ID:

ZNRD1

Uniprot

Q9P1U0

Synonyms:

DNA-directed RNA polymerase I subunit RPA12 (Zinc ribbon domain-containing protein 1), ZNRD1, RPA12

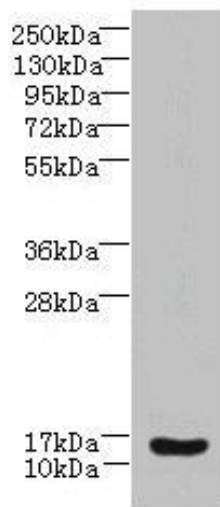
Immunogen:

Recombinant Human DNA-directed RNA polymerase I subunit RPA12 protein (1-126AA).

Storage:

Preservative: 0.03% Proclin 300. Constituents: 50% Glycerol, 0.01M PBS, PH 7.4

Product Images



Western blot. All lanes: ZNRD1 antibody at 14 μ g/ml + Human high value serum. Secondary. Goat polyclonal to rabbit IgG at 1/10000 dilution. Predicted band size: 14 kDa. Observed band size: 14 kDa.