

Product Information

Size:

50ug

Reactivity:

Human

Source:

Rabbit

Isotype:

IgG

Applications:

ELISA, WB, IHC, IF

Recommended dilutions:

ELISA:1:2000-1:10000, WB:1:500-1:2000,
IHC:1:20-1:200, IF:1:50-1:200

Protein Background:

Involved in G protein-coupled receptors (GPCRs) trafficking from the endoplasmic reticulum to the cell surface; it promotes the exit of GPCRs from the early secretory pathway, likely through interaction with the COPII machinery.

Gene ID:

CNIH4

Uniprot

Q9P003

Synonyms:

Protein cornichon homolog 4 (CNIH-4) (Cornichon family AMPA receptor auxiliary protein 4), CNIH4

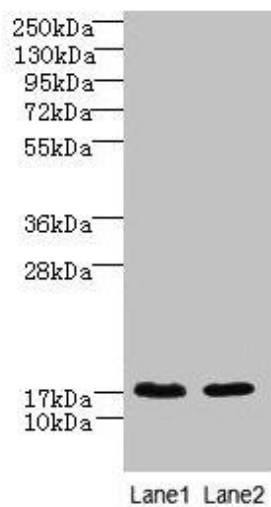
Immunogen:

Recombinant Human Protein cornichon homolog 4 protein (78-117AA).

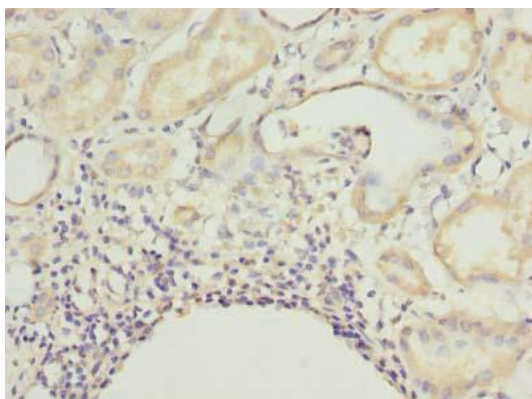
Storage:

Preservative: 0.03% Proclin 300. Constituents: 50% Glycerol, 0.01M PBS, PH 7.4

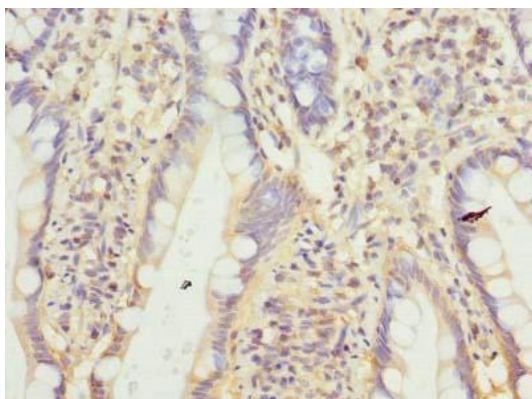
Product Images



Western blot. All lanes: CNIH4 antibody at 0.3 μ g/ml. Lane 1: A431 whole cell lysate. Lane 2: U251 whole cell lysate. Secondary. Goat polyclonal to rabbit IgG at 1/10000 dilution. Predicted band size: 17, 11 kDa. Observed band size: 17 kDa.



Immunohistochemistry of paraffin-embedded human kidney tissue using PACO42006 at dilution of 1:100.



Immunohistochemistry of paraffin-embedded human small intestine tissue using PACO42006 at dilution of 1:100.