

Product Information

Size:

50ug

Reactivity:

Human, Mouse

Source:

Rabbit

Isotype:

IgG

Applications:

ELISA, WB, IHC, IF

Recommended dilutions:

ELISA:1:2000-1:10000, WB:1:500-1:2000,
IHC:1:20-1:200, IF:1:50-1:200

Protein Background:

Thiol protease which recognizes and hydrolyzes the peptide bond at the C-terminal Gly of UFM1, a ubiquitin-like modifier protein bound to a number of target proteins. Does not hydrolyze SUMO1 or ISG15 ubiquitin-like proteins. Through TRIP4 deufmylation may regulate intracellular nuclear receptors transactivation and thereby regulate cell proliferation and differentiation.

Gene ID:

UFSP2

Uniprot

Q9NUQ7

Synonyms:

Ufm1-specific protease 2 (UfSP2) (EC 3.4.22. -), UFSP2, C4orf20

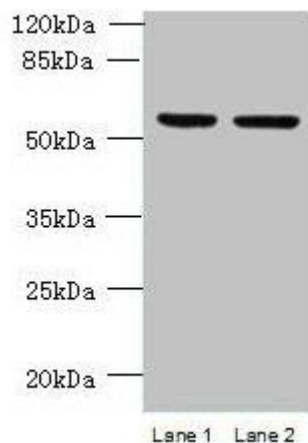
Immunogen:

Recombinant Human Ufm1-specific protease 2 protein (63-343AA).

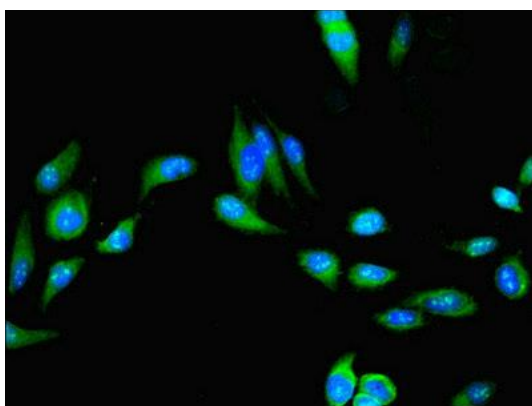
Storage:

Preservative: 0.03% Proclin 300. Constituents: 50% Glycerol, 0.01M PBS, PH 7.4

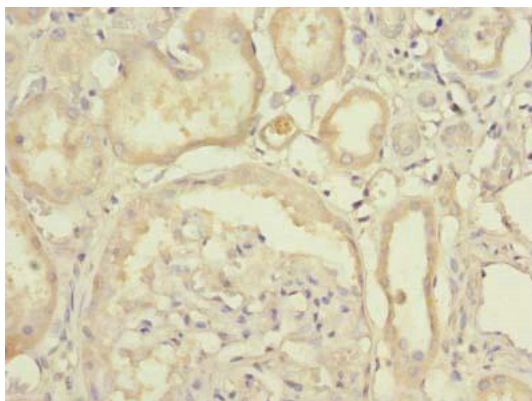
Product Images



Western blot. All lanes: UFSP2 antibody at 4 μ g/ml. Lane 1: HepG2 whole cell lysate. Lane 2: NIH/3T3 whole cell lysate. Secondary: Goat polyclonal to rabbit IgG at 1/10000 dilution. Predicted band size: 54 kDa. Observed band size: 54 kDa.



Immunofluorescent analysis of HeLa cells using PACO41986 at dilution of 1:100 and Alexa Fluor 488-conjugated AffiniPure Goat Anti-Rabbit IgG(H+L).



Immunohistochemistry of paraffin-embedded human kidney tissue using PACO41986 at dilution of 1:100.