

RIBC2 Antibody



PACO41918

Product Information

Size:

50ug

Reactivity:

Human

Source:

Rabbit

Isotype:

IgG

Applications:

ELISA, WB, IHC

Recommended dilutions:

ELISA:1:2000-1:10000, WB:1:1000-1:5000,
IHC:1:20-1:200

Protein Background:

nucleus.

Gene ID:

RIBC2

Uniprot

Q9H4K1

Synonyms:

RIB43A-like with coiled-coils protein 2, RIBC2, C22orf11

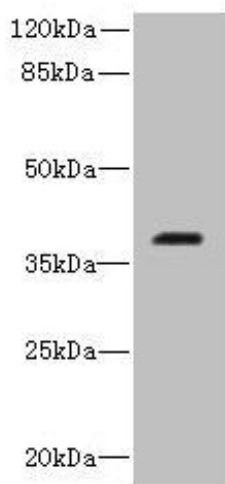
Immunogen:

Recombinant Human RIB43A-like with coiled-coils protein 2 protein (1-309AA).

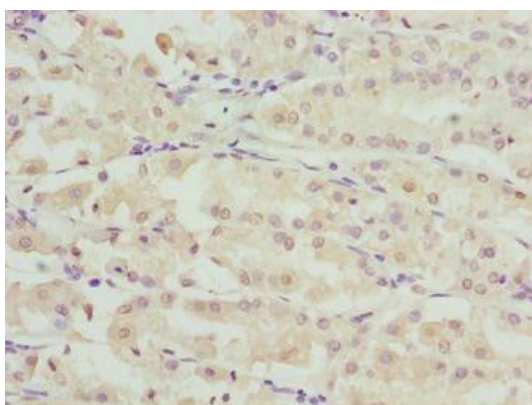
Storage:

Preservative: 0.03% Proclin 300. Constituents: 50% Glycerol, 0.01M PBS, PH 7.4

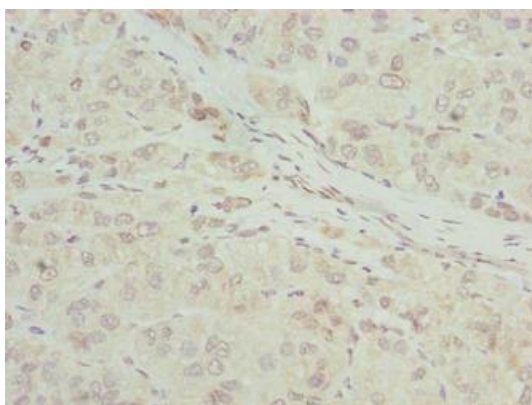
Product Images



Western blot. All lanes: RIBC2 antibody at 0.8 μ g/ml + Caco-2 whole cell lysate. Secondary. Goat polyclonal to rabbit IgG at 1/10000 dilution. Predicted band size: 38 kDa. Observed band size: 38 kDa.



Immunohistochemistry of paraffin-embedded human gastric cancer using PACO41918 at dilution of 1:100.



Immunohistochemistry of paraffin-embedded human liver cancer using PACO41918 at dilution of 1:100.