

PACO41910

Product Information

Size:

50ug

Reactivity:

Human

Source:

Rabbit

Isotype:

IgG

Applications:

ELISA, IHC

Recommended dilutions:

ELISA:1:2000-1:10000, IHC:1:20-1:200

Protein Background:

extracellular exosome, face morphogenesis.

Gene ID:

CRISPLD1

Uniprot

Q9H336

Synonyms:

Cysteine-rich secretory protein LCCL domain-containing 1 (CocoaCrisp) (Cysteine-rich secretory protein 10) (CRISP-10) (LCCL domain-containing cysteine-rich secretory protein 1) (Trypsin inhibitor HI), CRISPLD1, CRISP10 LCRISP1

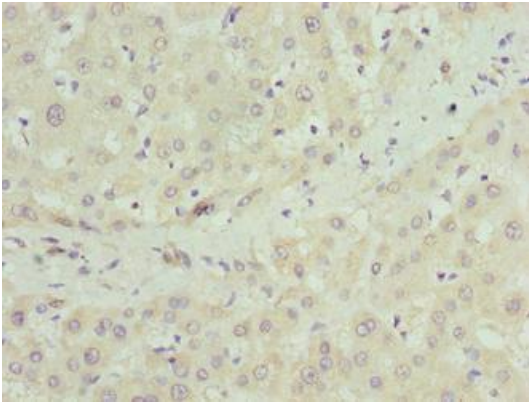
Immunogen:

Recombinant Human Cysteine-rich secretory protein LCCL domain-containing 1 protein (24-300AA).

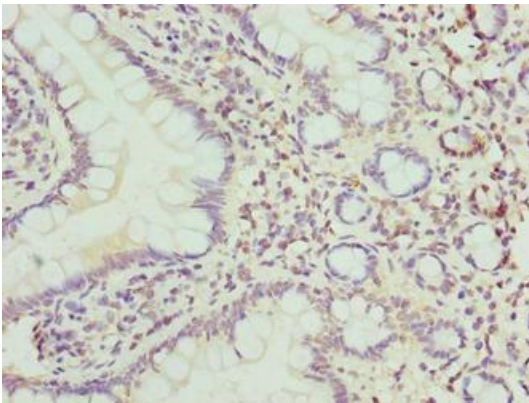
Storage:

Preservative: 0.03% Proclin 300. Constituents: 50% Glycerol, 0.01M PBS, PH 7.4

Product Images



Immunohistochemistry of paraffin-embedded human liver tissue using PACO41910 at dilution of 1:100.



Immunohistochemistry of paraffin-embedded human small intestine tissue using PACO41910 at dilution of 1:100.