

# IFI27L2 Antibody



PACO41906

---

## Product Information

**Size:**

50ug

**Reactivity:**

Human

**Source:**

Rabbit

**Isotype:**

IgG

**Applications:**

ELISA, IHC, IF

**Recommended dilutions:**

ELISA:1:2000-1:10000, IHC:1:20-1:200,  
IF:1:50-1:200

**Protein Background:**

**Gene ID:**

IFI27L2

**Uniprot**

Q9H2X8

**Synonyms:**

Interferon alpha-inducible protein 27-like protein 2 (Interferon-stimulated gene 12b protein) (ISG12(b)) (Protein TLH29) (pIFI27-like protein), IFI27L2, FAM14A TLH29

**Immunogen:**

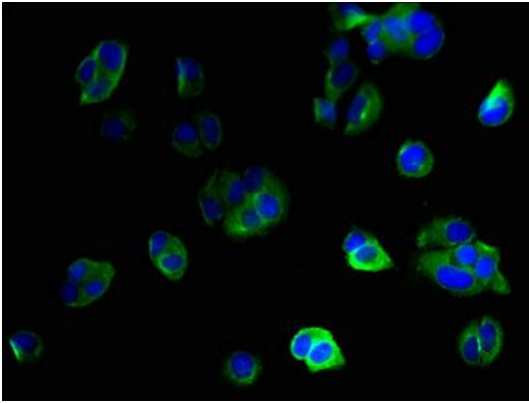
Recombinant Human Interferon alpha-inducible protein 27-like protein 2 protein (87-130AA).

**Storage:**

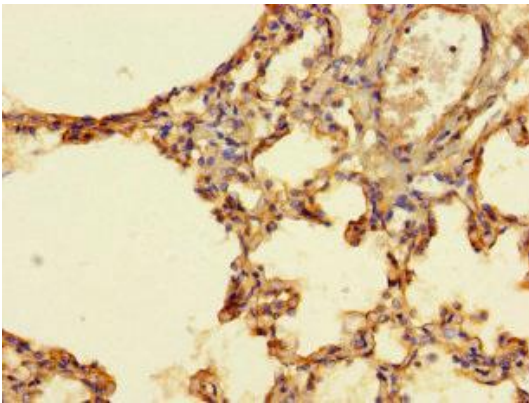
Preservative: 0.03% Proclin 300. Constituents: 50% Glycerol, 0.01M PBS, PH 7.4

## Product Images

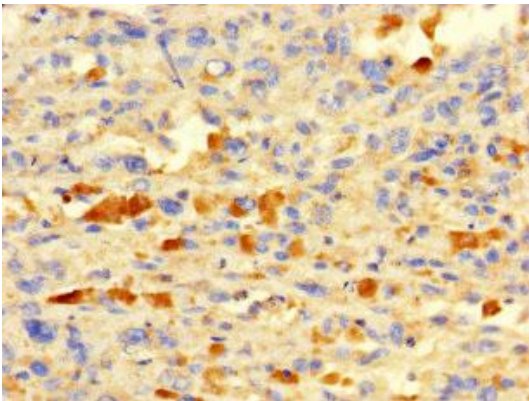
---



Immunofluorescent analysis of MCF-7 cells using PACO41906 at dilution of 1:100 and Alexa Fluor 488-conjugated AffiniPure Goat Anti-Rabbit IgG(H+L).



Immunohistochemistry of paraffin-embedded human lung tissue using PACO41906 at dilution of 1:100.



Immunohistochemistry of paraffin-embedded human melanoma using PACO41906 at dilution of 1:100.