

Product Information

Size:

50ug

Reactivity:

Human

Source:

Rabbit

Isotype:

IgG

Applications:

ELISA, WB

Recommended dilutions:

ELISA:1:2000-1:10000, WB:1:500-1:2000

Protein Background:

DNA-dependent RNA polymerase catalyzes the transcription of DNA into RNA using the four ribonucleoside triphosphates as substrates. Specific peripheric component of RNA polymerase III which synthesizes small RNAs, such as 5S rRNA and tRNAs. May direct RNA Pol III binding to the TFIIB-DNA complex. Plays a key role in sensing and limiting infection by intracellular bacteria and DNA viruses. Acts as nuclear and cytosolic DNA sensor involved in innate immune response. Can sense non-self dsDNA that serves as template for transcription into dsRNA. The non-self RNA polymerase III transcripts, such as Epstein-Barr virus-encoded RNAs (EBERs) induce type I interferon and NF- Kappa-B through the RIG-I pathway.

Gene ID:

POLR3F

Uniprot

Q9H1D9

Synonyms:

DNA-directed RNA polymerase III subunit RPC6 (RNA polymerase III subunit C6) (DNA-directed RNA polymerase III subunit F) (RNA polymerase III 39 kDa subunit) (RPC39), POLR3F

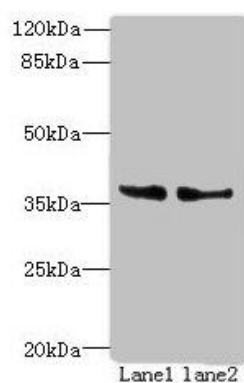
Immunogen:

Recombinant Human DNA-directed RNA polymerase III subunit RPC6 protein (1-270AA).

Storage:

Preservative: 0.03% Proclin 300. Constituents: 50% Glycerol, 0.01M PBS, PH 7.4

Product Images



Western blot. All lanes: POLR3F antibody at 8 μ g/ml. Lane 1: Hela whole cell lysate. Lane 2: HepG2 whole cell lysate. Secondary. Goat polyclonal to rabbit IgG at 1/10000 dilution. Predicted band size: 36 kDa. Observed band size: 36 kDa.