

CRISPLD2 Antibody



PACO41890

Product Information

Size:

50ug

Reactivity:

Human

Source:

Rabbit

Isotype:

IgG

Applications:

ELISA, WB

Recommended dilutions:

ELISA:1:2000-1:10000, WB:1:500-1:1000

Protein Background:

Promotes matrix assembly.

Gene ID:

CRISPLD2

Uniprot

Q9H0B8

Synonyms:

Cysteine-rich secretory protein LCCL domain-containing 2 (Cysteine-rich secretory protein 11) (CRISP-11) (LCCL domain-containing cysteine-rich secretory protein 2), CRISPLD2, CRISP11 LCRISP2

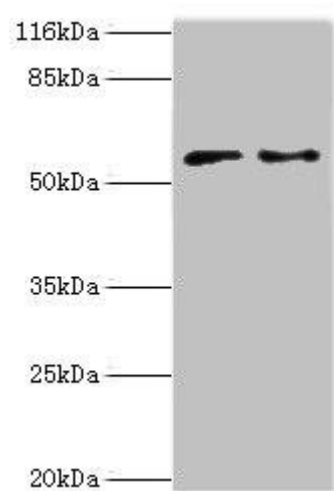
Immunogen:

Recombinant Human Cysteine-rich secretory protein LCCL domain-containing 2 protein (40-305AA).

Storage:

Preservative: 0.03% Proclin 300. Constituents: 50% Glycerol, 0.01M PBS, PH 7.4

Product Images



Western blot. All lanes: CRISPLD2 antibody at 2 μ g/ml. Lane 1: Jurkat whole cell lysate. Lane 2: CEM whole cell lysate. Secondary: Goat polyclonal to rabbit IgG at 1/10000 dilution. Predicted band size: 56, 52, 43, 18, 14 kDa. Observed band size: 56 kDa.